



ARCHABILITY  
by Active Mobility



# LUNA<sup>®</sup> X5

SHAPING THE FUTURE OF CARE

Class I Medical Device



# LUNA<sup>®</sup> X5

With the new LUNA<sup>®</sup> X5, take resident care to new heights with a sleek, discreet and smart design that blends effortlessly into any environment and daily care routine.

Built to adapt and evolve with your needs, its all-in-one concept, combined with enhanced lifting height, brings **unlimited flexibility**.

**Engineered for ease of use**, this revolutionary solution ensures intuitive and smooth operation, supporting both caregivers and residents, with a **seamless experience for installation and maintenance**.

## Unmatched experience



### DESIGN

A unique, elegant, discreet and adaptable conception, that fits your environment and follows your evolution.



### MAXIMIZED VALUE

Built to last for optimized Total Cost of Ownership (TCO) & return on investment.



### SIMPLICITY

Simple, safe and smooth to use for enhanced care.



### SUSTAINABILITY

The first system designed for sustainability and reduced environmental impact





# Design



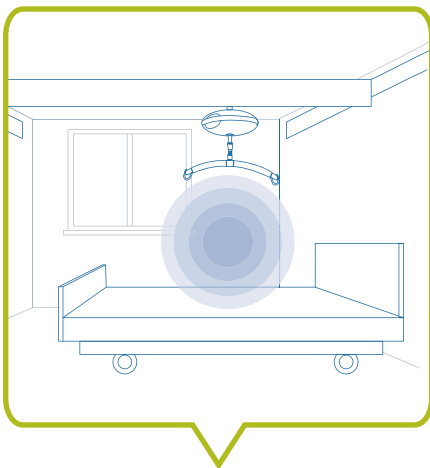
A unique elegant, discreet and adaptable design, that fits your environment and follows your evolution

## Leading with style

Highly discreet and elegant, the system keeps your rooms beautiful and welcoming, **to promote residents and carers well-being.**

## Adaptable everywhere

A flexible track system with ceiling, wall, or embedded installation, seamlessly **integrating into any care environment.**



# LUNA<sup>®</sup>X5

## All-in-One solution

Flexible conception that can be used to accompany all of your needs over time.

### More flexibility with one product

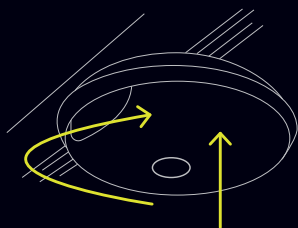
- > With a single product, you can easily adapt to any situation, including changes in resident needs (such as loss of autonomy or fall management), new residents, and room changes.
- > **All-in-one weight capacity** : Supports 150, 200, or 275 kg lifting loads in a single solution.

Fixed and portable ceiling lift are combined in the same model!

### Fixed

#### Yet easily removable

within seconds, without tools and without intervention on tracks.



LUNA<sup>®</sup>X5 in fixed mode



LUNA<sup>®</sup>X5 in portable mode

Easy to install from one room to the other, effortlessly



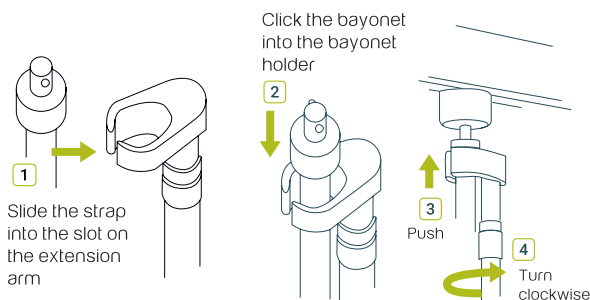
### Transport trolley

To move the LUNA<sup>®</sup>X5 from one room to another effortlessly, store accessories and charge the lift.



### Extension arm

Telescopic **light and highly manoeuvrable extension arm**. Can be stored safely on the trolley.





Only  
**5,2 kg**  
One of the lightest  
lift available on  
the market.

### Intuitive & ergonomic hand control

1. Emergency stop
2. Emergency stop indicator
3. Battery indicator
4. Up
5. Down
6. Reset
7. Emergency lowering



## Simplicity

Simple, safe and smooth  
to use for enhanced  
care

### Comfortable & humanized

Enables **smooth and gentle movements**,  
with enhanced contact with  
caregiver and with reduced strain on  
the dependent person's body,  
contributing to a safe and **comfortable  
transfer**.



### Embedded safety

- ✓ Emergency stop button always  
within reach. Integrated to the hand  
control.
- ✓ Patented spreader bar hooks for  
safe slings installation.





“Why change the entire hand control when you could just change the cable or the back hook ?”



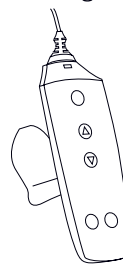
## Maximized value

Built to last for **optimized TCO \*** & **return on investment**  
(Total Cost of Ownership)

- **Guaranteed reliability**  
so that the solution is always working and operational for your teams.
- **Increased durability & repairability**  
to **minimize maintenance costs** (e.g. spare parts like hand control, battery) and maximize shelf life.
- **Easy & fast maintenance,**  
in less that 5 minutes.

**+ 20 000 to 30 000 cycles,  
for unparalleled lifetime**

Reduced and controlled maintenance costs, for maximized cost-efficiency throughout product lifetime



### Smart maintenance

The new re-design of the remote control allows to just change the cable or the hook instead of replacing the entire handcontrol.



## Sustainability

The first system **designed for sustainability & reduced environmental impact.**



**Pioneer tracks made of minimum 75% recycled** post-consumer scrap aluminum, reducing carbon footprint by 66%.



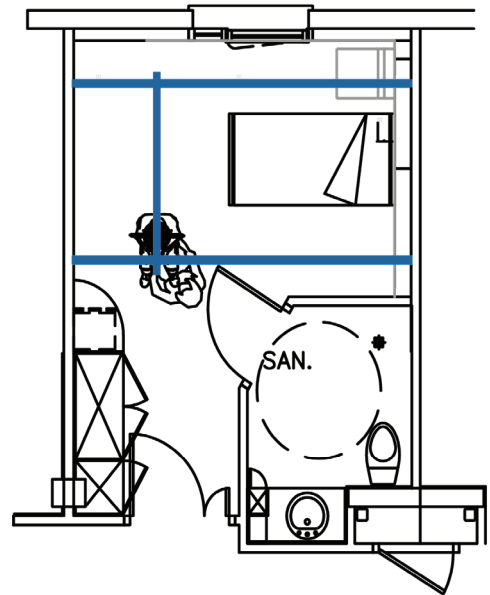
**Eco-designed and lightweight** lifting module to reduce carbon footprint during the entire lifecycle of the product.

### Ecodesigned lifting module

- Designed for simplicity, durability, and repairability.
- Optimized number of parts, also reducing potential component failures.
- Lightweight module, of only 5,2kg, reducing transport related carbon emissions.

# Which track configuration suits your need?

Our objective: optimize your usage and return on investment with **evidence-based best practices**.



## XY tracks combined with a fixed lift

- ✓ Complete room coverage.
- ✓ Enables fall management, rehabilitation and active mobilisation
- ✓ Adapts to changes in equipment, furniture and layout
- ✓ Traverse and lift can be installed **only when necessary**
- ✓ **Does not require electrical work**



### Multiply usage rate

by x3 on a daily basis, offering much wider possibilities than curved.



### Offers adaptability

to resident profiles, which are evolving and changing ever more rapidly



### Reduces maintenance costs

because it minimizes motor handling



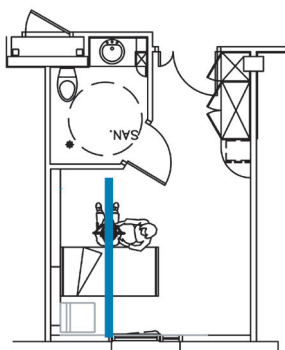
**Preserves the aesthetics of the room**



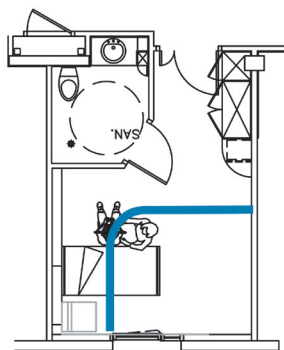
**Is in line with the recommendations & fundings of health authorities**

## Multiple configuration possibilities

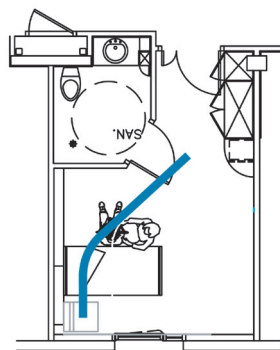
If necessary, multiple configuration possibilities are available"



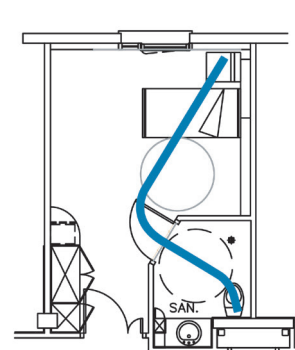
Linear tracks



90° curved tracks



45° curved tracks



Curved tracks

# Discover our exclusive track range

The right balance  
between aesthetics,  
lightness and robustness

## > **Elegant & discreet**

for preserved aesthetics in the room and a **health promoting environment**. Unique thin, white, rounded track design, with seamless fixation system

## > **Blends in effortlessly everywhere,**

in any facilities or room type, from existing building or houses to construction project.

## Benefits



### **Lightweight tracks**

for easy handling and reduced risks of MSDs for installation teams.



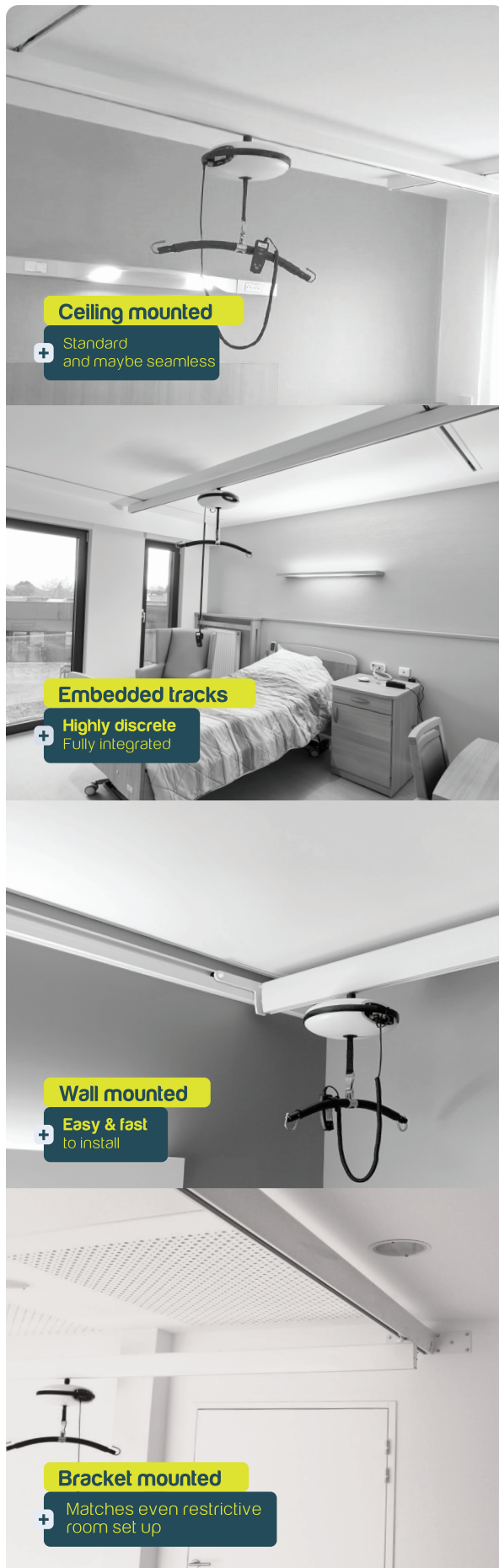
### **Simpler and faster**

installation because of reduced items and fewer steps.



### **Sustainability pioneer**

the first green tracks of CLS history. Made of minimum **75% recycled post-consumer scrap aluminium**. Carbon footprint **reduced by 66%** (scope 1-2-3)



#### **Ceiling mounted**

+ Standard  
and maybe seamless

#### **Embedded tracks**

+ Highly discrete  
Fully integrated

#### **Wall mounted**

+ Easy & fast  
to install

#### **Bracket mounted**

+ Matches even restrictive  
room set up

## Features

**Max. capacity:** 150, 200 or 275 kg

**Lifting range :** 2500 mm

**Weight:** 5.2 kg without spreader bar

**Measurements :** Ø 320 x H 130 mm

**Battery:** 36V NiMH | **Charging:** 100-240V, 0.3A

**Cover:** High impact, moulded ABS

**Noise:**

- LwA during lifting/lowering without load is 49dB(A)
- LwA during lifting/lowering with 175 kg load is 53dB(A)

**Charging time:**

Appr. 5 hours to fully charge empty battery

**Lifting/lowering speed:**

- 42 mm/sec. with 15-275 kg load
- 90 mm/sec. with 0-15 kg load

**No. of lifts per charge:**

Approx. 85 lifting cycles with 90 kg

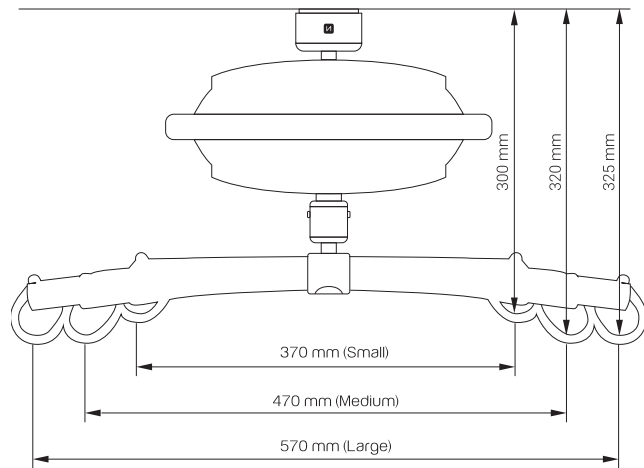
**Protection class:**

- Lifting module : IPX4
- Hand control : IPX7

**Expected lifetime:** 20 years or 30.000 lifts

**5-year warranty**

Same measurements for both fixed and portable mode



## Accessories



### 2-point spreader bar

available in 3 sizes  
(Small, Medium, Large)



### 3-point spreader bar



### Universal weighing scale

Weighing accessory  
Graduation class III  
(accuracy 100g)



### Weighing scale

Weighing accessory  
Graduation class III  
(accuracy 100g)



### Slings

Full range of slings  
to meet all needs



### In-Track Charging

Different kits depending  
on track configuration.  
Retrofit available



### Transport trolley

L.144 x P. 508 x H.950 mm

### Telescopic extension arm

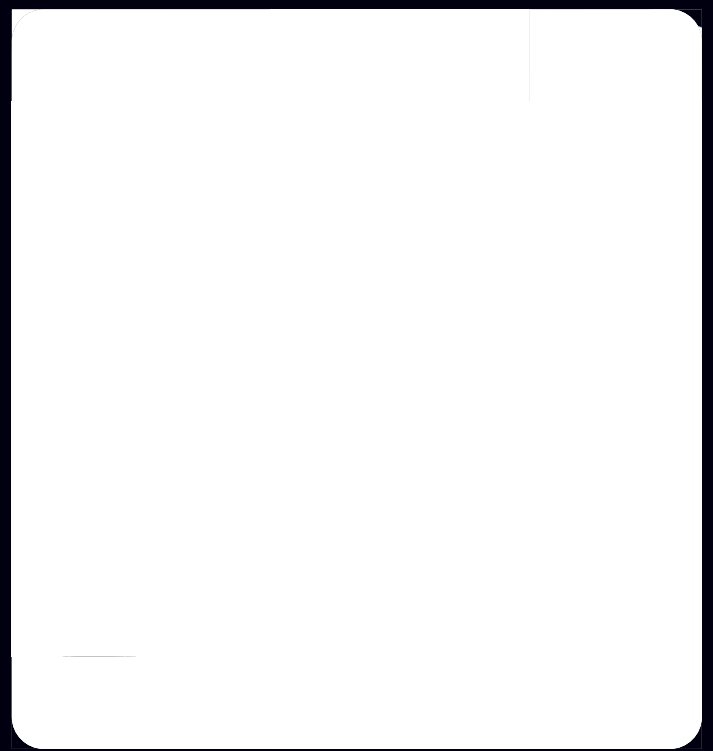
Light & highly manoeuvrable  
extension arm.

Can be stored  
safely on the  
trolley.

Available  
in 2 sizes:  
650-1100mm  
or 1000-1800mm









# LUNA<sup>®</sup>X5