

Active Mobility



CEILING HOISTS

Ceiling Hoists
Gantry Systems
Tracking Systems
Ceiling Hoist Accessories

Intelligent Mobility Solutions

CEILING HOISTS

Luna Fixed Ceiling Hoist



SPECIFICATIONS

The Luna overhead tracking hoist is unique in making a track hoist into a flexible technical aid. Luna can be mounted in different positions on the track and may be changed at will to suit varying care needs. The Luna track unit can also be adapted to suit existing tracks so that total replacement is not necessary. Luna can be described as a fixed and portable ceiling hoist in one and the same unit, a truly unique feature.

Changing Luna from fixed to portable mode, and vice versa, can be done within seconds by simply detaching and reattaching the unit to the track. No tools are needed.

This unique two-in-one feature makes Luna the preferred ceiling hoist for care facilities as it provides a flexibility of choice, allowing the final decision of either fixed or portable unit to be made at a later point. This flexibility is a cost effective advantage for the institution.

Maximum Capacity	220kg
Length of Lifting Strap	2200mm
Weight	6.7kg
Measurements	320x130mm
Battery Operations	36V
Charging	100-240V, 0, 5A
Chassis	Aluminium
Housing	High impact, moulded ABS
Noise	Lwa during lifting/ lowering without load is 49 dB. Lwa during lifting/ lowering at maximum load is 53dB

Luna Portable Ceiling Hoist



SPECIFICATIONS

When combined with the E-track, the Luna powered ceiling hoist creates a versatile overhead lifting solution suitable for any room or lifting need. The Luna overhead tracking hoist is unique in making a track hoist into a flexible technical aid. Luna can be mounted in different positions on the track and may be changed at will to suit varying care needs. The Luna track unit can also be adapted to suit existing tracks so that total replacement is not necessary.

- Soft start and stop motor control
- Electrical emergency lowering & Electrical emergency stop
- Low battery indicator (visual LED)
- Charging indicators & Power on indicators
- Overload protection
- Emergency brake system

Maximum Capacity	220kg
Length of Lifting Strap	2200mm
Weight	6.7kg
Measurements	320x130mm
Battery Operations	36V
Charging	100-240V, 0, 5A
Chassis	Aluminium
Housing	High impact, moulded ABS

CEILING HOISTS

Monarch Fixed Ceiling Hoist - Manual or Powered



SPECIFICATIONS

The Monarch Fixed Ceiling Hoist is a complementary product to other products for individuals with mobility challenges. It is designed for use by caregivers and health professionals to lift and transfer a person in a homecare, assisted-living or hospital environment.

The Monarch Fixed Ceiling Hoist is one of the only ceiling hoists on the market using reliable lithium ion (Li-ion) battery technology. Most competitor products use Lead-acid (heavy, toxic, low cycle life) or NiMH.

Available in Manual or Powered Traverse

- Unique spreader bar with secure sling mechanism
- Fast- lifts up to 30% more quickly than other models
- Low lift clearance- slim profile means more room to maneuver patient
- Li-ion battery- recharges twice as fast as average competitor products
- Ultra lightweight- weighing 8kg 35% lighter than other competitors
- 200kg/ 270kg safe working load

Maximum Capacity	200kg or 270kg
Weight	7.5kg (Manual), 8.5kg (Powered)
Function	Patient Lifting, Room-to-room transfer
Lifts per charge	30 to 40 cycles
Speed with 200kg	4.5cm/s
Soft start/stop	Yes
Emergency stop/lower	Yes
Track options	Compatible with all Monarch track and other leading track manufacturers

Monarch Portable Ceiling Hoist



SPECIFICATIONS

The Monarch Portable Ceiling Hoist is one of the lightest on the market weighing only 5kg, whilst lifting the industry standard of 200kg. Ideal for occasional or multiple room use, the product is robust and charges with an AC Charger.

The unique spreader bar includes our industry leading Secure Sling Mechanism designed to ensure loop attachments cannot be unintentionally removed.

Perfect for rental properties, multi-room, temporary or short-term use, the Monarch Portable Ceiling Hoist can be used as a flexible alternative to fixed overhead hoists.

- Ideal for rental properties or hotels for nonpermanent use
- Easy-to-use Carabina clip
- Accessible charging/switch
- Loop Sling Spreader Bar

Maximum Capacity	200kg
Weight	5kg
Lifts per Charge	30 to 40 cycles
Track Options	H system, Turntable, Gate, Curves, Room-to-room,
Track Compatibility	Freestanding Gantry: 2m, 3m, 4.5m, 6m, 8m Compatible with all Monarch track and other leading track manufacturers
Application	Nursing homes, hospitals, domestic use, school, leisure centre, physiotherapy

CEILING HOISTS

Transactive Fixed Ceiling Hoist - Manual or Powered



The Freeway Transactive Xtra Ceiling Track Hoist, is undoubtedly the safest, easiest and most practical way to safely transfer clients from one surface to another.

Installed at ceiling level complete with innovative tracking solutions, the Freeway TransactiveXtra Ceiling Track Hoist provides the caregiver with increased access to the client making their job safer and making the transfer more comfortable for the client.

The TransactiveXtra benefits from a low profile design which is unobtrusive yet provides a much greater lifting height than any other hoist option.

Available with Power Traverse or Manual Traverse.

SPECIFICATIONS

Maximum Capacity	200kg, 270kg
Approx. number of lift before recharge	With 85kg load= approximately 65 lifts
Charging time	8 hours maximum
Weight	9.7kg (Manual), 10.4kg (Powered)
Lifting Speed	Loaded 0.15m/s; Unloaded 0.25m/s
Batteries	2x12v 5Amp
Battery protection	Sleep Mode
Voltage	24VDC
Transformer	IP 67 rated 30V AC output 230V AC input 50/60m

Voyager Portable Ceiling Hoist



Weighing only 5.5kg with battery and 4.3kg without, the Voyager Portable is one of the lightest units available today. The easy grip handle and rubber feet make it easy to carry and set down anywhere. Voyager will accommodate most patients with its high lift capacity of 200kg and its rechargeable battery can perform up to 30 lifts.

The Voyager Portable hoist, Easytrack and Easytrack FS systems combine to form a unique portable overhead lifting solution for the home, care home and hospital environment. Whether it's for homecare, an emergency or temporary solution, or just that a fixed ceiling lifter is not suitable, the Voyager Portable provides the perfect answer.

SPECIFICATIONS

Maximum Capacity	200kg
Soft Start and Stop	Yes
Emergency Lower/ Stop	Yes
Low Battery Indicator	Audible
Battery Capacity (load of 75kg)	Up to 30 transfers
Battery Charger	Freestanding
Weight (including Battery)	5.5kg
Quick release Tape Mechanism	Yes
Vertical Speed	Yes

CEILING HOISTS

Molift Nomad Portable Ceiling Hoist



A lightweight battery powered portable overhead track hoist that provides vertical movement using a hand control, or using push buttons on the motor unit. Horizontal movement is operated manually. It is made of fibre armoured plastic and aluminium, has integrated handles and a curved design to allow extra head clearance. It has emergency stop and lowering functions along with a built in lift counter, indicators for servicing and charging. Various sling and tracking options available.

- Curved design
- Lightweight but a heavy lifter
- Room-to-room transfer
- Connect and disconnect without tools
- Accessible controls
- Automatic service notification

SPECIFICATIONS

Maximum Capacity	230kg or 255kg
Height of lift	2m (Length of lifting belt)
Weight (including Batteries)	6.8kg
Length Overall	522mm
Width Overall	200mm
Height Overall	329mm
Battery charge	4hours
Number of lifts (75kg load)	80 lifts

Bariatric Ceiling Hoist C-380



Bariatric clients often exceed a hoist's safe working load and this can create an unsafe working environment. In cases when a client's weight, size or medical condition requires precise control when transferring or re-positioning, the Prism C-380 Bariatric Ceiling Track Hoist provides a safe and reliable solution.

The Prism C-380 is specifically designed to lift clients that exceed a standard hoist's maximum weigh capacity. As the strongest Ceiling Track Hoist in its class, the Prism C-380 safely transfers bariatric clients with respect and dignity.

- Emergency stop/emergency lower
- Smooth stop start to ensure user comfort
- Carry bar fitted with Quick Release System for simple interchange of carry bars

Available with Power Traverse or Manual Traverse

SPECIFICATIONS

Maximum Capacity	380kg
Weight (including Batteries)	15kg
Length Overall	330mm
Width Overall	200mm
Height Overall	120mm
Material	Aluminium/ ABS
Colour	White/ Blue
Power	240V

GANTRY SYSTEMS

Monarch Gantry System



The Monarch Track Gantry System offers a temporary solution and an alternative hoisting system where installing track into the ceiling is not possible.

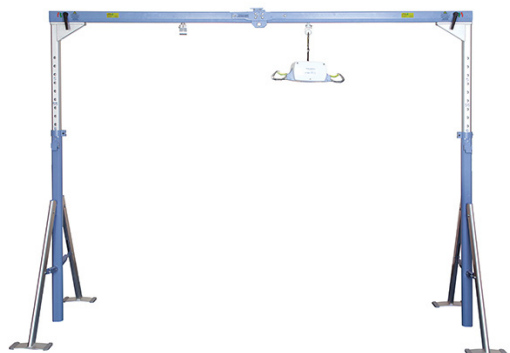
The Monarch Gantry System is a portable track system ideal in situations where permanent ceiling track isn't necessary. Compatible with fixed and portable Monarch Hoists, Monarch Track offers a temporary solution and an alternative hoisting system where installing track into the ceiling is not possible.

When used in apartments and holiday homes, hotels or when the ceiling hoist (or overhead track hoist) is not a permanent fixture, the Monarch Track Gantry System is ideal. The Monarch ceiling hoist gantry is compatible with all Monarch hoist options.

SPECIFICATIONS

- **Maximum Capacity: 200kg**
- **Extra low profile base to reduce trip hazard**
- **Easy assembly, no drilling required**
- **Easy and fast to tailor on-site**
- **Suitable for fixed & portable OpeMed Ceiling Hoists**

Freeway Prism Gantry System



The innovative Prism FSG-136 Free Standing Gantry System has been designed with both caregiver and client in mind and is ideal for use in a variety of situations.

Fully portable, it can easily be moved to any location and assembled by one person in a matter of minutes with no tools required. Its ability to be set up by a single person make this an ideal piece of equipment for use in a single handed care package. The Prism FSG-136 Free Standing Gantry is height adjustable and no component weighs more than 8kg.

Secure and sturdy, the Free Standing Gantry can be used for both temporary and permanent applications with no modifications to a room required. This gantry system offers great flexibility as it can be used in conjunction with a number of hoist options including the Prism CP-136 and the Prism C-136.

SPECIFICATIONS

Maximum Capacity	136kg
Hoisting Span	2420mm
Height Adjustable Range	1380-2290mm
Leg Width (when extended)	915mm
Weight	21kg
Portable solutions	
Easy to assemble	

GANTRY SYSTEMS

2-post Mobile Flex System



Suitable for people who need an immediate and/ or temporary hoisting solution that can be easily and simply fitted, used and removed. The gantry is easy to assemble, and no tools are required to adjust height and width in order to provide reliable temporary solution.

Adjusting the height is carried out in just a few seconds providing immediate use for the carer and client. The telescopic tracks give enough lifting height to provide solutions that are suitable for most care rooms and most transfer situations.

The mobile gantry combined with Ergolet's innovative Luna overhead lift, is a simple and functional lifting system and the ideal choice for either home care or institutional use.

The mobile gantry provides a lifting capacity up to 275kg thus utilizing the full range of the Luna lifting unit.

SPECIFICATIONS

- Weight capacity of 275kg
- Two different lengths
- Height and width adjustable
- Mounted on wheeled base
- Easy assembly and adjustments
- Utilizes full functionality of the Luna overhead lift
- Only 1150 mm in depth
- Bayonet cart as standard
- Height adjustable via gas piston
- Class leading design and functionality

4-post Mobile Flex System



Room covering and free standing traverse system from Ergolet. Mobile Flex is a flexible system that is easy to install and can be used right after the installation. Mobile Flex is installed and dismantled without any changes to the room. Due to its many adjustment options, Mobile Flex meets all lifting and transferring needs. Combined with the Luna ceiling lift, Mobile Flex is a simple and functional lifting system.

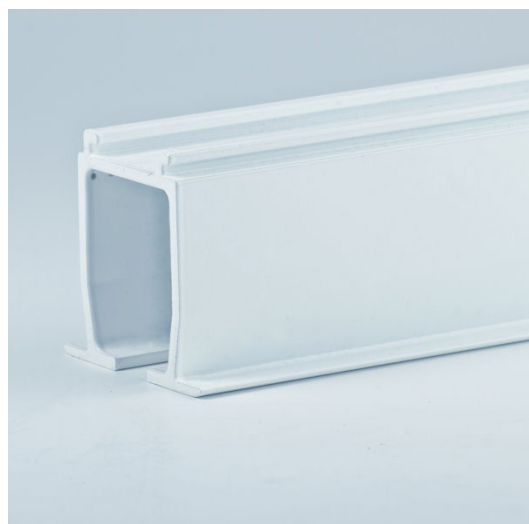
Available in following sizes:

- 3x3m
- 3x4m
- 4x3m
- 4x4m

SPECIFICATIONS

- Weight capacity of 275kg
- Applies full capacity of the Luna ceiling lift
- Available in several variants
- Covers up to 4x4 meters
- Easy assembly and adjustments
- Fully adjustable 4-pole system
- Bayonet trolley
- Can be used outdoors

TRACKING SYSTEMS



Fineline Tracking System

A number of options need to be considered when specifying overhead patient lifting systems - the most important being the points of transfer the client is seeking to achieve.

Flushline Tracking System:

- Curved rails are used to change the direction of rails in a single rail system
- Available in internal or external design

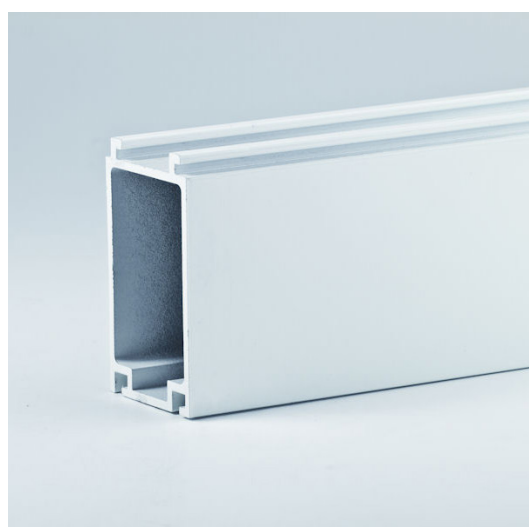


Slimline Tracking System

Your client might consider linear system, with or without curves. For more flexibility a room-covering system can be installed, using either the ceiling or walls for client's support.

Slimline Tracking System:

- Suitable for systems with long spans or large SWL
- Goes with AMS Slimline Track Rail



Piggy Back Tracking System

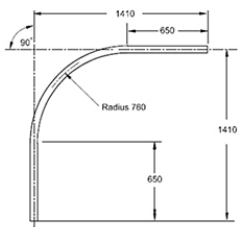
- Suitable for system up to 450kg SWL
- Suits all AMS hoist units, bends, turntables, XY systems & accessories

TRACKING SYSTEMS

Bend Options

Bends are available in the following options:

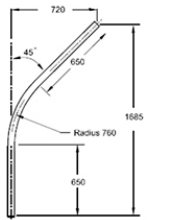
- 15 degree bend
- 22.5 degree bend
- 45 degree bend
- 90 degree bend



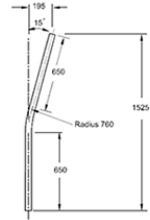
90° Bend Track – standard part dimensions



22.5° Bend Track – standard part dimensions



45° Bend Track – standard part dimensions



15° Bend Track – standard part dimensions



Turntable Options

The Multi-Port Powered Turntables offers the end user ultimate flexibility in situations that require access to a number of transfer locations. The turntable provides 10 take-off points in graduations of 22 degree. Suitable for fixed C-Series hoists up to 300kg SWL. Operated via hoist controls, no need for additional power supply.

- Provide 10 different ceiling rail take-off points
- Easily rotated with the use of pull cord
- Suitable for C-Series hoists
- No need for additional power supply

TRACKING SYSTEMS

Wall Mounted E-Track System



Ergolet's E-Track represents a revolution in tracking techniques. Innovative Scandinavian design at its best, the wall mounted E-Track is a thin profile blending into the home and institutional environment, removing the need for unsightly conventional wall or ceiling brackets. E-Track can be mounted on most wall types.

Used with the Luna ceiling lift, the wall mounted E-Track and traverse bar provide safe, total room lifting coverage, regardless of room layout or furnishings. More versatile than conventional ceiling track, E-Track easily installs in rooms with vaulted, uneven or disrupted ceilings without the need for expensive bracing. The flexibility of the E-Track system means that traverse systems may be transferred simply, easily and quickly from one room to another.

Ceiling Mount Tracks



Our ceiling track options can work together for flexible room coverage systems and can adjust to various weight requirements. And our unique door connecting gate system can facilitate room-to-room transfers.

- An efficient solution for situations where a specific, point-to-point lifting need has been identified
- Aluminum tracks offer strong lifting capacity, suitable for bariatric lifting needs
- Straight and curved tracking options can combine easily to create an efficient path around obstacles
- Switches and turntables can be utilized to change paths and accommodate the individual and room needs.
- Door connectors can be installed to facilitate room-to-room transfer situations

CEILING HOIST ACCESSORIES



Standard Yoke

- Complete with a secure press fit
- Self-skinning polyurethane cover
- Suitable for lifting with weigh scale attachment

Suitable for:

- Monarch Fixed Ceiling Hoists
- Freeway Fixed Ceiling Hoists



Integrated Standard Yoke

- Reduces loss of lifting height compared with other hoist scales
- Use with general purpose(loop attachment) slings
- Non-absorbent polyurethane padding
- Usefull option for weighing clients when they are unable to use a standard scale

Suitable for:

- Monarch Fixed Ceiling Hoists
- Freeway Fixed Ceiling Hoists



4 Point Yoke

- Complete with a velcro fastening vinyl cover
- Suitable for lifting with multiple points of attachmnet
- Suitable for lifting with weigh scale attachment

Suitable for:

- Monarch Fixed Ceiling Hoists
- Freeway Fixed Ceiling Hoists

CEILING HOIST ACCESSORIES



Pivot Frame

- Powder coated pivot frame with a safe working load of 200kg
- Complete with a secure press fit self-skinning polyurethane cover
- Reduces loss of lifting height compared with other hoist scales
- Use with pivot (clip) slings
- Non-absorbent polyurethane paddings

Suitable for:

- Monarch Fixed Ceiling Hoists
- Freeway Fixed Ceiling Hoists



Powered/Manual Integrated Pivot Frame

- Powder coated pivot frame with a safe working load of 200kg
- Complete with a secure press fit self-skinning polyurethane cover
- Reduces loss of lifting height compared with other hoist scales
- Use with pivot (clip) slings
- Non-absorbent polyurethane paddings

Suitable for:

- Monarch Fixed Ceiling Hoists
- Freeway Fixed Ceiling Hoists



Weigh Scale

- Universal Weighing module with tare function and kg / lb conversion
- Suitable for yoke or pivot attachments
- Available on all Allegro brand hoists and some non-Allegro hoist (as approved by Active Mobility)
- Useful where weighing of patients is difficult due to the level of support required
- SWL of 300 kg

Suitable for:

- Monarch Fixed Ceiling Hoists
- Freeway Fixed Ceiling Hoists

CEILING HOIST ACCESSORIES

Portable Weigh Scale



- On/ Off/ Zero/ Tare button
- Hold button
- Big display
- Weighing capability up to 300 kg
- Accuracy of 0.1kg

Suitable for:

- Monarch Fixed/ Portable Ceiling Hoists
- Luna Fixed/ Portable Ceiling Hoists
- Freeway Fixed/ Portable Ceiling Hoists
- Molift Nomad Ceiling Hoists

V shaped 3 Point Spreader Bar



- Increases the distance between the shoulder strap section and the leg strap section
- Opening up the sling for a more comfortable lift

Suitable for:

- Luna Fixed Ceiling Hoists
- Luna Portable Ceiling Hoists

4 Point Spreader Bar



- Increases the distance between the shoulder strap section and the leg strap section
- Opening up the sling for a more comfortable lift

Suitable for:

- Luna Fixed Ceiling Hoists
- Luna Portable Ceiling Hoists

CEILING HOIST ACCESSORIES

Flexi Link Reacher



SPECIFICATIONS

The fastest, most efficient portable hoist connection system. Efficient, safe and simple to operate. Our patented Flexi-Link Connection System is today's most advanced device for connecting the portable hoist to the trolley.

Featuring a removable wand, the Flexi-Link Connection System allows carers to move around freely without fear of a handle hitting not only themselves, but lights, fans, doors, or other ceiling fixtures. Available in 600mm (24") or 900mm (36") wands.

- SWL 300kg
- Available in 600mm (24") or 900mm (36")
- Connection/Disconnection time - less than 10 seconds
- Turns portable hoists into fixed units in moments
- Compatible with all AMS approved portable hoists

Floor Trolleys



SPECIFICATIONS

Large Floor Trolleys

Ergonomically designed, this large 2 shelved floor trolley with reacher holder is a must for transporting a portable ceiling hoist unit from room to room in an institutional environment. Designed in conjunction OH & S coordinators and occupational therapists to prevent potential back injuries, the large floor trolley glides along on full size, non-marking rubber castors. The bottom shelf is ideal for sling storage. Suits all AMS portable hoists.

Small Floor Trolleys

Designed specifically for home use, this compact little trolley makes transporting a portable hoist around the house a breeze. Comes with a reacher holder and single shelf.

- **Overall Height** 82cm / 95cm
- **Overall Width** 33.5cm / 43.5cm
- **Overall Length** 40cm / 57.5cm
- **Depth of Shelf** 53cm / 10cm

- Design to suit all hoists
- Flexi-Link Connection System or arm - reacher holder
- Sling Storage Shelf
- Quality castors
- Flexi-Link Connection System or arm-reacher holder

CEILING HOIST ACCESSORIES

Luna Trolley



Because the Luna is an extraordinarily flexible lifting device, it may need to be moved from room to room, and from overhead applications to mobile lifting devices – both in the home and in healthcare facilities.

The lightweight, easy-rolling Luna Trolley enables quick and efficient movement of the Luna between applications with no lifting and no exertion. An extension arm assures easy transfer of the Luna unit to and from the Trolley. It even features onboard charging for convenience.

SPECIFICATIONS

- **Weight** 11kg
- **Height** 950mm
- **Length** 370mm
- **Width** 492mm
- Specially designed cradle to easily move the Luna between rooms and applications.
- On-board charger and charge holder.
- Holder for slings and accessories.
- Transfer, storage and charging station, all in one compact unit.



Active Mobility

Active Mobility Systems

Unit 8, 110-120 Silverwater Rd., SILVERWATER NSW 2128

P: 02 9649 2111 **F:** 02 9649 8506

W: www.activemobility.com.au **E:** sales@activemobility.com.au

