



Active Mobility

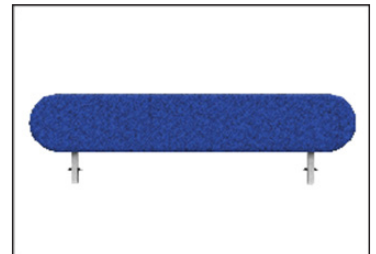
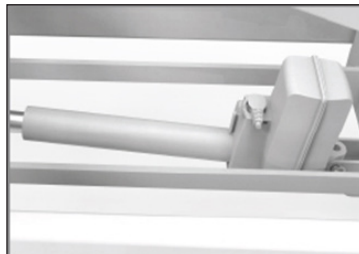


www.activemobility.com.au

02 9649 2111



KINGSDENE JUNIOR Change Table



The Kingsdene Junior Change Table is designed to address a wide range of manual handling issues to benefit both patient and carers. The height adjustment allows for comfortable handling of the patient to the correct positional height during procedures with enhanced safety and care. This change table is suitable for smaller areas.

The Kingsdene Junior Change Table includes:

Cot Side - Fitted upholstered cot sides, where both sides are collapsible

Motor - Utilises a high-grade electric actuator that's driven to enable full adjusted product hi-lo

Twin Lift - Strong twin-lift mechanism ensures rigidity and stability during treatment

Castor - Four 5" castors, all with brakes

SPECIFICATIONS

Construction	High quality steel sections, and sheet construction utilizing the latest manufacturing techniques throughout
Upholstery	Manufactured in line with using high quality foam, lining with vinyl/imitation leather without edge stitches, prohibits/anti bacterial, and also fire retardant
Height Adjustment	Using high-grade electric actuator motor Hi-Lo upholstery platform, elevation 525-975mm
Cot Side	Upholstered cot sides, where both sides are collapsible
Coating	Epoxy Powder coating finish
Max. Load	200kg
Weight	Approx 63kg
Length (Table Top)	1250mm
Length (With Cot End)	1460mm
Length (Base Frame)	1380mm
Width	710mm

ARTG 312129
ISO 9001:2015 ISO13485:2016 ISO14001:2015 ISO 45001:2018 CE

