

Carina350EM/EE

SystemRoMedic™

SWL
165 kg
350 lbs



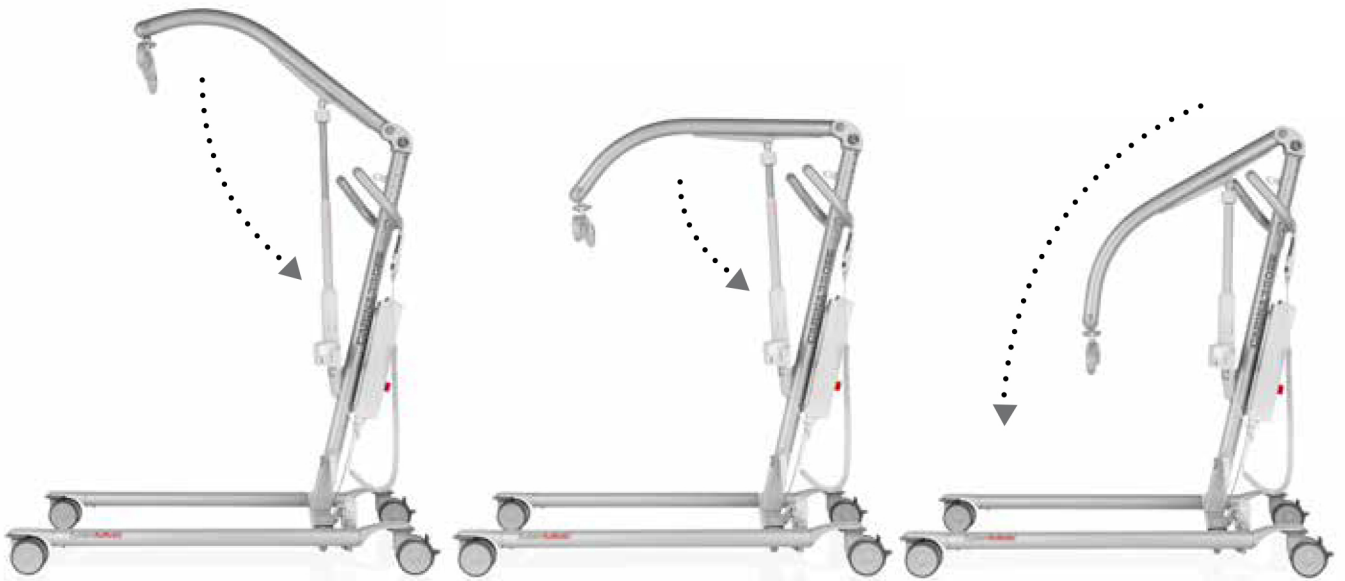
A versatile and economical solution for safe and easy lifting

Carina350 is a foldable, mobile patient lift adapted for safe and easy lifting of users weighing up to 165 kg/350 lbs. Carina350 is available in four variants, with manual or electrical base widening and with standard height or low legs. All variants are sturdy and stable and can handle most lifting situations and requirements. Carina350 offers a unique combination of functionality, performance and quality in relation to price. A more economical solution is hard to find!



Active Mobility

Carina – four foldable variants



Flexible and versatile

Carina350 is a foldable, mobile patient lift adapted for safe and easy lifting of users weighing up to 165 kg/350 lbs. The lift is sturdy, stable and safe and, at the same time, light-weight for a steel lift. Carina350 has a relatively narrow and compact design, which means that the lift can fit into and reach practically anywhere, even in tight spaces.

In spite of the handy size, Carina350 offers an unusually high lifting height for a foldable lift, 1680 mm/66.1".

The total lifting range is also very large and, therefore, Carina350 can manage most lifting situations and requirements; both low and high lifting, seated or supine, to and from the floor, bed or chair.

Easy to set up and fold

Carina350 is foldable and requires very little space during transportation and storing. With just a few, simple operations and without any tools, Carina350 can be folded or set up as required.

The lift can be used in all situations, and, when needed elsewhere, it is easy to move between different users, rooms and homes. The lift is delivered folded.



Using a quick-connecting locking pin, the actuator is released from the lift arm.

The lift arm is folded down and securely fastened to the mast with a tension strap.

Finally, the mast is folded down towards the base.



Endcover Carina, art. no. 70200030

Carina350 requires very little space when folded. The measurements are 1216 x 683 x 428 mm (47.9 x 25.3 x 16.8").



Carina350EE,
with electrical base widening



Carina350EM,
with manual base widening, low legs

Manual or electrical base widening

Carina350 is available in two models. Carina350EM has manual base widening, which means that the distance between the legs of the lift can be increased or reduced using the pedal at the lower back part of the lift. Carina350EE has electrical base widening and a base widening motor, which is controlled using the hand control.

Standard height or low legs

Both models are available in two variants with standard height or low legs for use with lower beds.

Ergonomic and easy-to-use for the caregiver

Carina350 features free-rolling, maintenance-free castors with locks on the rear castors. The grip-friendly handle bars offer multiple hand placement options and is adjustable in two heights. This allows the caregiver to work in an ergonomically correct manner, thus preventing work-related injuries and minimizing discomfort and pain for those already burdened with a work-related injury.

The hand control has clearly marked, easy-to-push buttons for lifting and lowering and, for Carina350EE, for electric base widening. All motion stops as soon as the buttons are released. The hand control has a hook for easy storage, hanging on the lift. The hand control is always easy to find and the risk of cable tangle is minimized.

In case of emergency

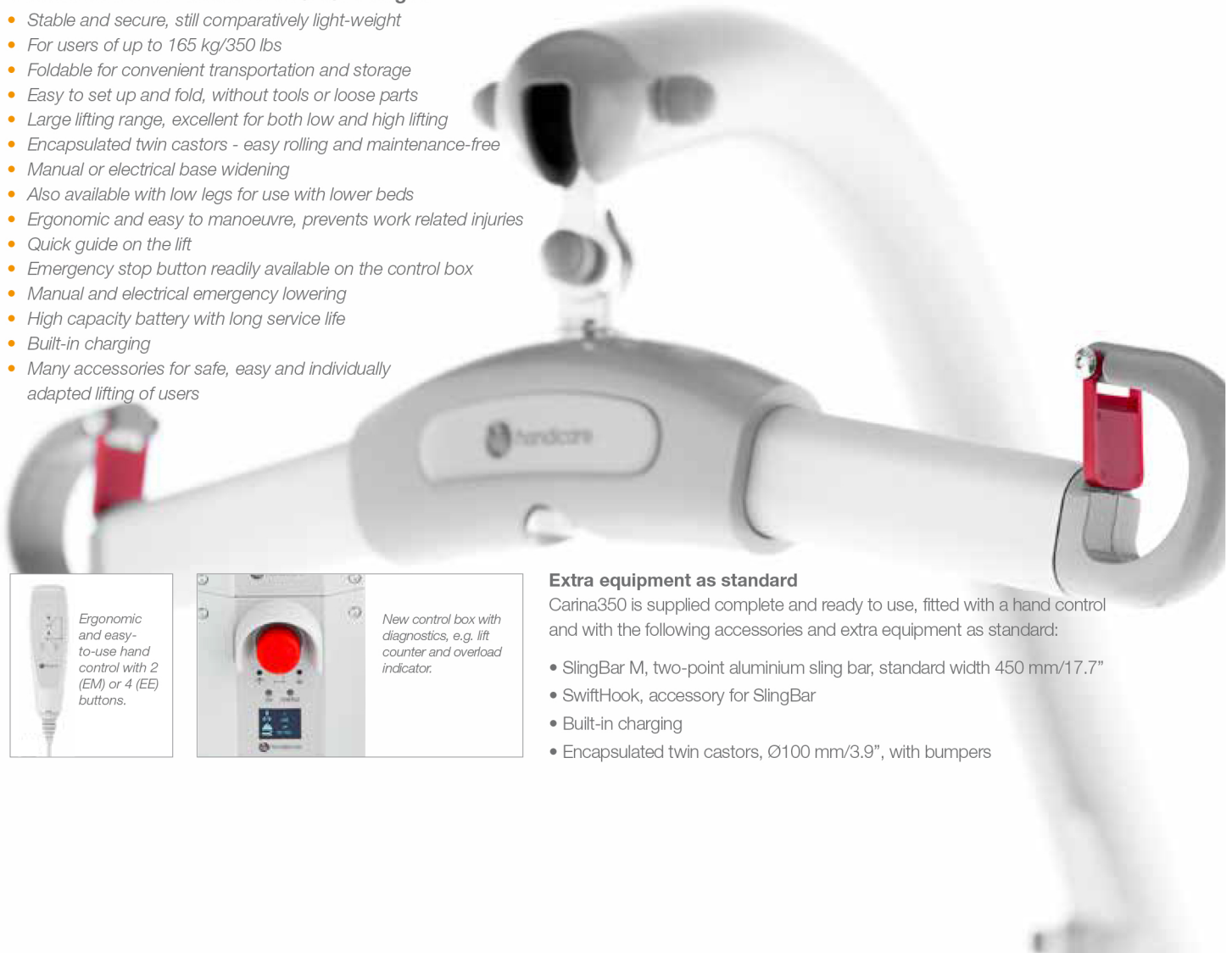
Carina350 has an emergency stop button readily available on the control box. The lift also features both manual and electrical emergency lowering.

Reliable power supply

The battery has high capacity allowing for performance of many lifts per charge. This means that charging is needed less frequently. A sound signal can be heard when the battery level is low and an indicator on the control box shows when charging is in progress and when the battery is fully charged.

Carina350EM/EE - features and advantages

- Stable and secure, still comparatively light-weight
- For users of up to 165 kg/350 lbs
- Foldable for convenient transportation and storage
- Easy to set up and fold, without tools or loose parts
- Large lifting range, excellent for both low and high lifting
- Encapsulated twin castors - easy rolling and maintenance-free
- Manual or electrical base widening
- Also available with low legs for use with lower beds
- Ergonomic and easy to manoeuvre, prevents work related injuries
- Quick guide on the lift
- Emergency stop button readily available on the control box
- Manual and electrical emergency lowering
- High capacity battery with long service life
- Built-in charging
- Many accessories for safe, easy and individually adapted lifting of users



Ergonomic and easy-to-use hand control with 2 (EM) or 4 (EE) buttons.



New control box with diagnostics, e.g. lift counter and overload indicator.

Extra equipment as standard

Carina350 is supplied complete and ready to use, fitted with a hand control and with the following accessories and extra equipment as standard:

- SlingBar M, two-point aluminium sling bar, standard width 450 mm/17.7"
- SwiftHook, accessory for SlingBar
- Built-in charging
- Encapsulated twin castors, Ø100 mm/3.9", with bumpers

