

Accessible Bathroom



Accessible bathroom for people living with disabilities



Standard accessible toilets do not meet the needs of all people with a disability or their carers. People with profound and multiple learning disabilities, as well as spinal injuries, spina bifida, motor neurone disease, multiple sclerosis or an acquired brain injury, often need extra facilities to allow them to use the toilets comfortably.

The NDIS will change the lives of people with a disability for the better in many ways but without Accessible bathrooms people with a disability and their carers will not be able to realise these opportunities.

The Accessible Bathroom initiative advocates for the installation of "Changing Places" toilets in key community spaces across metropolitan and regional Australia. This includes:

- shopping centres
- train stations
- aquatic facilities
- sporting and recreational complexes
- cultural facilities and tourist attractions
- parks
- civic centres
- airports
- hospitals



Accessible bathrooms are to be provided in addition to and separate from regular accessible toilets to accommodate the needs of both groups of toilet users

Without Accessible Bathrooms carers are forced to choose between changing their loved-ones on the floors of public toilets or being confined to the four walls of their home. Accessible Bathrooms are different to standard accessible toilets as they have extra features and more space to meet these needs.

Support from NDIA

The introduction of the National Disability Insurance Scheme (NDIS) provides support to individuals and families but does not include community infrastructure. Despite all the support of the NDIS, many people's lives will remain restricted. Accessible Bathrooms underpins the goals of the NDIS by removing a considerable barrier to social inclusion and community participation by providing toilet facilities that meet the needs of people with a severe or profound disability.

Accessible Bathrooms features

Each Accessible Bathroom provides:

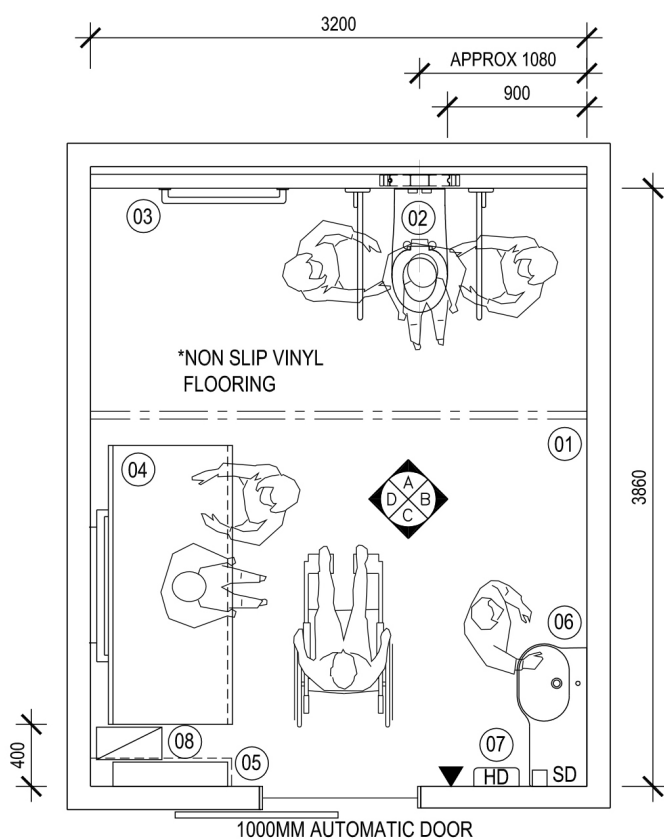
- a height adjustable adult-sized change table
- a tracking hoist system
- enough space
- safe and clean environment



Accessible Bathrooms will enhance the carer's physical wellbeing through removing the need to lift the person with a disability

The provision of a Accessible Bathroom is a great step towards creating an inclusive built environment for all people with a disability.

Design options

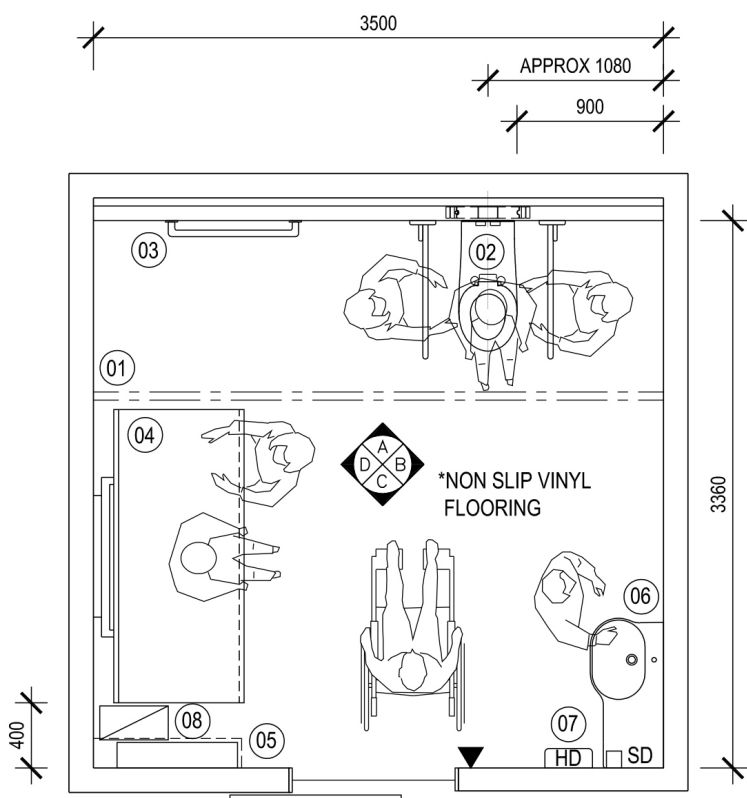


Type 1A

- 01 Room coverage hoist
- 02 Accessible WC incl. backrest and lift up grab rails
Two 800mm long horizontal grab rails mounted at 800mm and 1000mm above floor level for adjusting clothes
- 03 1000mm above floor level for adjusting clothes (while person holds onto grabrail)
- 04 Adjustable height change table, 1800mm long with side safety rail
- 05 Disposable change table cover dispenser with shelf over
- 06 Integrated wash hand basin
- 07 Hand dryer
- 08 Rubbish bin
- 09 Retractable privacy curtain, wall mounted
- 10 Soap dispenser
- 11 Clothes hook
- 12 Large sling hook
- 13 Automatic door control

Accessible Bathrooms provide the right equipment, enough space and a safe and clean environment

Design options



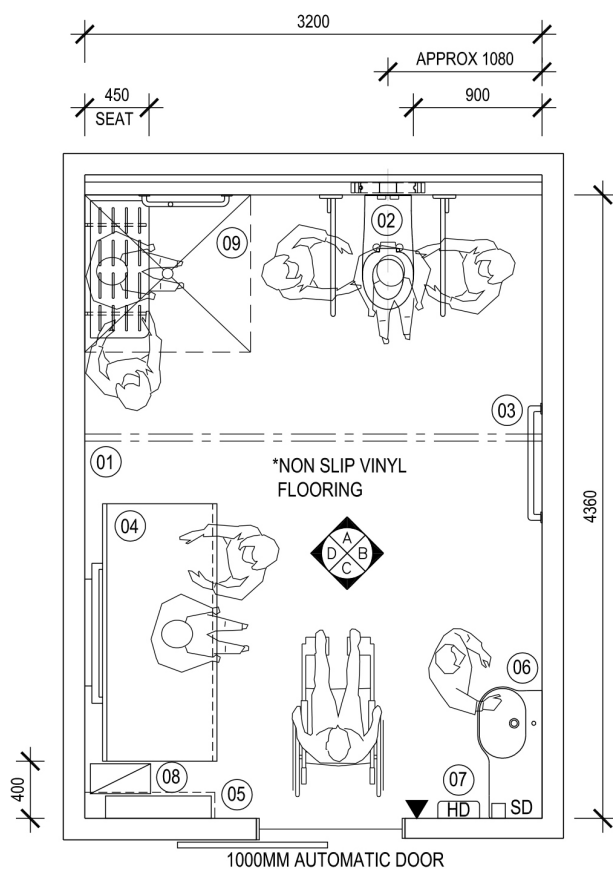
Type 1B

- 01 Room coverage hoist
- 02 Accessible WC incl. backrest and lift up grab rails
Two 800mm long horizontal grab rails mounted at 800mm and 1000mm above floor level for adjusting clothes
- 03 1000mm above floor level for adjusting clothes (while person holds onto grabrail)
- 04 Adjustable height change table, 1800mm long with side safety rail
- 05 Disposable change table cover dispenser with shelf over
- 06 Integrated wash hand basin
- 07 Hand dryer
- 08 Rubbish bin
- 09 Retractable privacy curtain, wall mounted
- 10 Soap dispenser
- 11 Clothes hook
- 12 Large sling hook
- 13 Automatic door control



Accessible Bathrooms are different to standard accessible toilets in that they have extra features and more space to meet people's needs

Design options



Type 2

- 01 Room coverage hoist
- 02 Accessible WC incl. backrest and lift up grab rails
Two 800mm long horizontal grab rails at 800mm
- 03 1000mm above floor level for adjusting clothes (while person holds onto grabrail)
- 04 Adjustable height change table, 1800mm long with side safety rail
- 05 Disposable change table cover dispenser with shelf over
- 06 Integrated wash hand basin
- 07 Hand dryer
- 08 Rubbish bin
- 09 Retractable privacy curtain, wall mounted
- 10 Accessible shower
- 11 Soap dispenser
- 12 Clothes hook
- 13 Large sling hook
- 14 Automatic door control

“Sometimes you just need to change one thing to open up a world of possibility...”

STANDARD

Montar Change table
XY Ceiling mounted tracking system
Freeway transactive hoist
AMS shower curtain
Standard grade bathroom fixture

PREMIUM

Reval Change table
XY Wall mounted tracking system
Luna ceiling hoists
Pressalit shower curtain
Premium grade bathroom fixture

PLATINUM

Pressalit Change table
XY Wall mounted tracking system
Luna Transactive Hoist
Pressalit shower curtain
Platinum grade bathroom fixture



Accessible Bathroom and Changing Places in the public domain are an essential feature of modern community projects

Signs are a real help for users of Accessible Bathrooms and Changing Places toilets. The Changing Places symbol is increasingly recognised and should always be displayed at a Changing Places venue. Signs with the Changing Places symbol should be at the entrance to the toilet, inside the venue and on appropriate street signage.

External facility signage

A sign is to be provided outside the facility doorway complying with BCA, Specification D3.6:

1. Located on the wall on the latch side of the door between 50mm and 300mm from the architrave (BCA, D4.2 (c)(i)).
2. Braille and tactile information is to be provided on the signage complying with Specification D3.6 of the BCA.
3. Braille and tactile sign is to be located between 1200mm and 1600mm AFFL (BCA, Clause 2 Specification D3.6).

Internal signage

Internal signage must contain the instruction of:

Change table operating instruction by providing detailed operating instructions for the change table.

Ceiling hoist operating instruction by providing detailed operating instruction and charging instruction for the ceiling hoist.

Ceiling Hoist Instruction

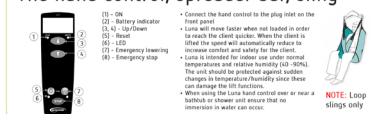
Luna Fixed - how it works

- Hold and use the spreader bar to pull the hoist into a clear area for safe use
- Make sure there are no obstructions around you
- Take care to familiarise yourself with the features of this hoist



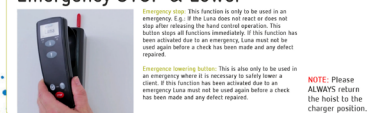
The hand control, spreader bar, sling

- Connect the hand control to the plug inlet on the front panel
- Luna will move faster when not loaded in order to reach the client quicker. When the client is lifted the hand will automatically reduce to increase control and safety for the client.
- Luna is intended for safety use under normal temperature and weather conditions (see manual). The unit should be protected against weather changes in temperature/humidity (see manual).
- When using the Luna hand control near or near a bathtub or shower unit ensure that no connection in water can occur.



Emergency STOP & Lower

- Emergency stop: This function is only to be used in an emergency. E.g. if the Luna does not react or does not stop after making the hand control operation. This button stops all functions immediately. If this function has been activated due to an emergency, Luna must not be used again before a check has been made and any defect repaired.
- Emergency lowering button: This is also only to be used in an emergency where it is necessary to safely lower a client. If this function has been activated due to an emergency, Luna must not be used again before a check has been made and any defect repaired.



Change Table Help Guide

The Change Table - Nursing Bench

Support the bench using your hand or body when folding it up and down, to avoid the risk of damage. The built-in gas cylinders make it easy to fold the bench up against the wall after use.

To pull the (optional) safety rail up: Push the safety rail (folded under the bench) downwards to release it. The safety rail will then slide up by itself, and can be locked into position.

To hold the safety rail away: Release the two locks 2 simultaneously while leaning a bit on the safety rail. The safety rail can now be pushed back to the underside of the bench and locked into place.

When the bench is installed at the correct height (recommended installation height is 800mm above the floor), it can be adjusted between 300 and 1000mm above the floor.

The height adjustment is controlled by the wired remote control unit. Press and hold the Up button 1 to raise the bench, and press and hold the Down button 2 to lower the bench.

The height adjustment is controlled by the wired remote control unit. Press and hold the Up button 1 to raise the bench, and press and hold the Down button 2 to lower the bench.

Take care to avoid injury to hands when in the vicinity of changing mechanical parts.

The Change Table - Cleaning

Clean the nursing bench after each use. Use ordinary soapy water. Rinse off with fresh water and dry with a soft cloth.

Do not leave the pads soaked in water. Remove the pads and dry the water collection tray 1.



www.changingplaces.org.au

Need assistance?
1800 543 837
www.activemobility.com.au



Changing Places

CHANGING PLACES

Ceiling Hoists

Ceiling hoists provide a room coverage hoist system, also called XY system. The XY system includes 2 parallel fixed rails and a perpendicular moving traverse rail. This provides coverage over the entire room for greatest flexibility when using the facility. Ensure full coverage of the bathroom, including toilet and change table, is provided.

Hoist Charging Station

Locate the hoist changing station in a position which will not interfere with users of the room when the hoist is not being used; typically this will be over the change table. Do not locate charging station over the WC pan.

Performance details

Track system equivalent to:

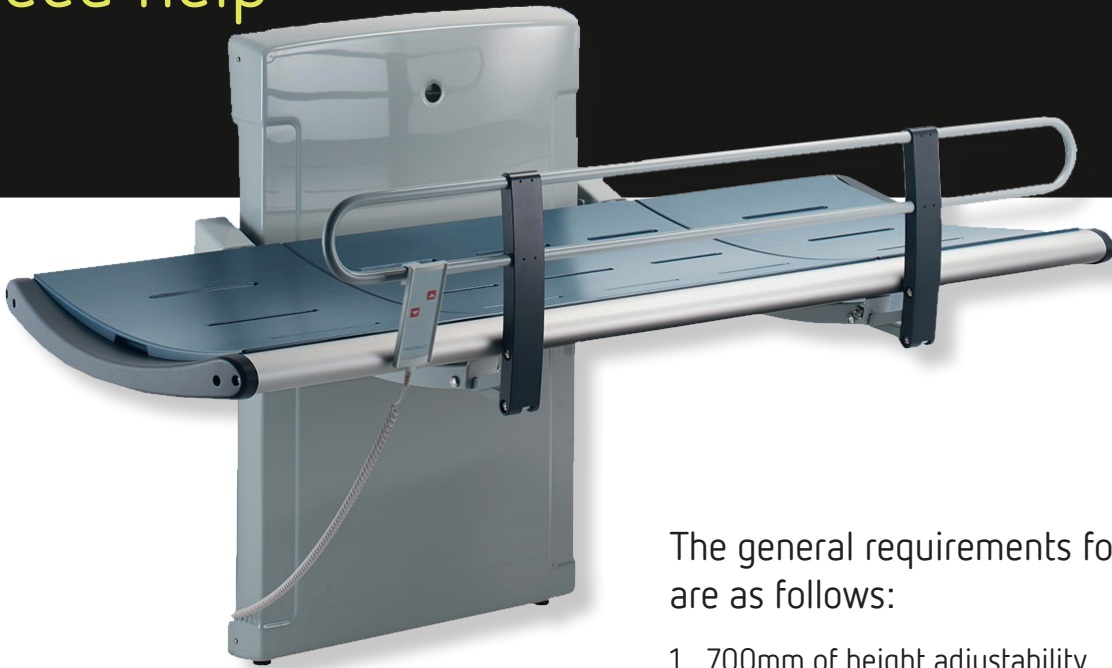
1. Rail system with a safe working load (SWL) equal to or greater than 180kg.
2. Two fixed parallel rails.
3. One moving traverse rail. (May require piggyback support rail).
4. Includes wall or ceiling mounted charger.
Standard GPO required to be provided by builder at ceiling level.

Hoist system equivalent to:

1. Fixed hoist
2. Lifting height up to a min 210cm
3. Safe working load equal to or greater than 180kg
4. Hoist case flame retardant ABS



Change Tables provide a comfortable, stable platform to get changed on for people who need help



Provide a paper towel cover and dispenser or antiseptic wipes for cleaning of the table.

Provide a shelf for storage of supplies by users of the room. Shelf to be 400 x 150mm wide minimum.

The general requirements for the change table are as follows:

- 1 700mm of height adjustability (Minimum 300mm - Maximum 1000mm)
- 2 700mm table width
- 3 A safety rail that can be folded up or down easily
- 4 Remote controlled, low voltage for safe operation in a wet area
- 5 Weight loading capacity to be min. 180kg
- 6 If a freestanding style change table is used it must have two safety sides
- 7 Manually adjustable back support (desirable only, not mandatory)



Nursing Bench
(Adjustable Height Nursing Bench)

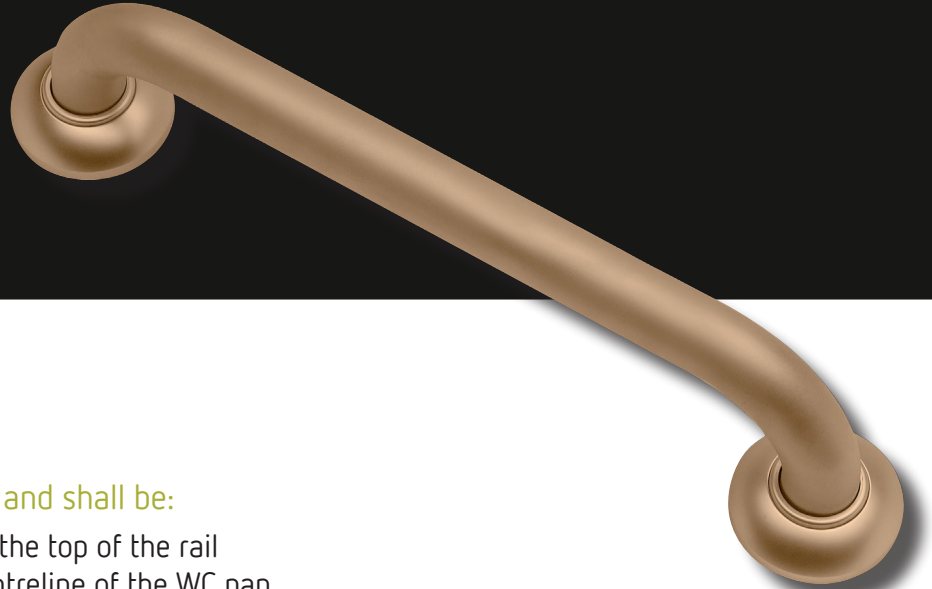


Montar
(Fold-up Change Table)



Reval Amber
(High/Low Change Table)

Toilet and Hand wash basin fittings



Fold down grabrails shall be provided and shall be:

1. Located at a height of 800mm to the top of the rail
2. Locate 360 - 370mm from the centreline of the WC pan
3. 850mm minimum long
4. 32mm diameter
5. Securely fixed to withstand a force in any direction of 1100 N
6. At least one grabrail is to contain a toilet paper holder
7. Capable of being lifted up or swung away to allow unimpeded access to the WC pan



Toilet seat

A toilet seat shall be provided in compliance with the current version of AS1428.1, including the requirements to:

1. Be of the full-round type and with minimal contours to the top surface
2. Be securely fixed in position when in use
3. Have seat fixing that create lateral stability for the seat when in use
4. Be load-rated to 150kg
5. Have a minimum luminance contrast of 30% with the background (e.g. pan, wall or floor against which it is viewed)



Hand wash basin

The installation of wash basins shall be in compliance with the current version of AS1428.1 including:

1. The wash basin shall be installed within the height range to 800-830mm
2. Exposed hot water supply pipes shall be insulated or located so as not to present a hazard
3. Water supply pipes and waste outlet pipes shall not encroach on the required clear space under the washbasin
4. Hand wash basin is to have an integrated lay off area of a minimum 300mm wide





Unit 8, 110-120 Silverwater Rd
SILVERWATER NSW 2128

A DIVISION OF ACTIVE MOBILITY

T 02 9649 2111
E archability@activemobility.com.au
W www.activemobility.com.au
www.archability.com.au

