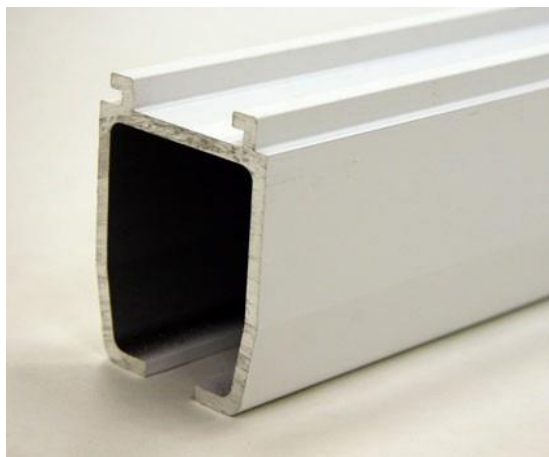


Slimline Ceiling Hoist Track

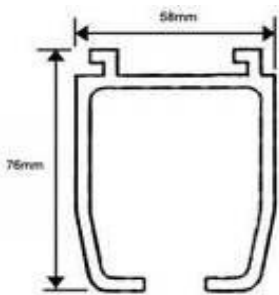
This lightweight, aesthetically pleasing rail is suitable for systems up to 450kg SWL and is able to be recessed into the ceiling if required. Suits all hoist units, bends, turntables, XY systems and accessories.

Slimline rails are used in both linear and XY applications. Standard lengths are 2m, 3m, 4m & 6m.



Specifications

Product specifications	
Product weight capacity	Up to 450kg
Product length	2000, 3000, 4000, 6000mm std
Product width	58mm
Product height	76mm
Product weight	2kg per lineal meter
Product material	Aluminium
Product colour	White
Warranty	12 months against faulty extrusion



Dimensions



90° bend



Turntable