



ARCHITECT FILE

Active Mobility Systems

Unit 8, 110-120 Silverwater Rd. Silverwater NSW 2128

Tel: 02 9649 2111 Fax: 02 9649 8506

E: sales@activemobility.com.au

W: www.activemobility.com.au



MOBILE GANTRIES

Ideal solution for rooms where temporary and immediate lifting solutions are needed

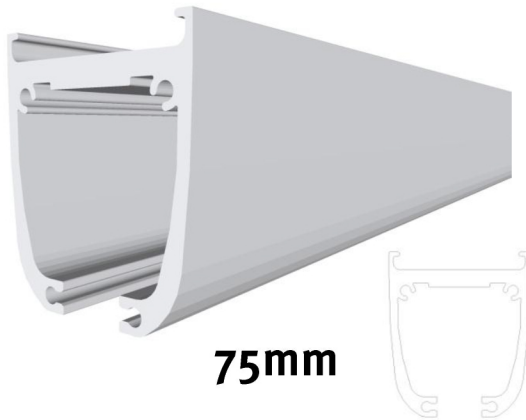
Two models: Fixed Height & Adjustable Height. Both models width adjustable

Easily assembled, dissassembled, height and width adjusted without the need for tools

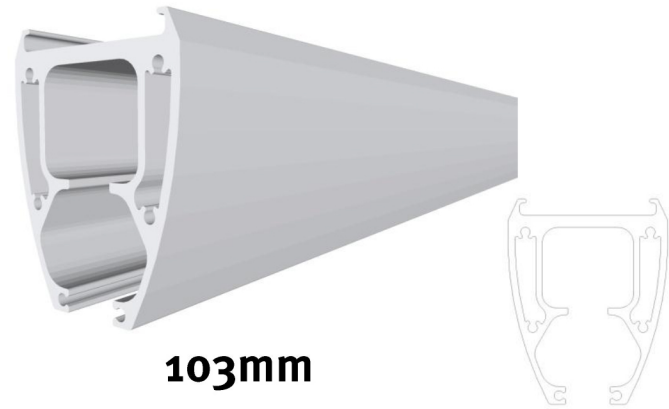
Width adjustability: 217 mm – 330 mm.
Height adjustability: 198 mm - 243 mm



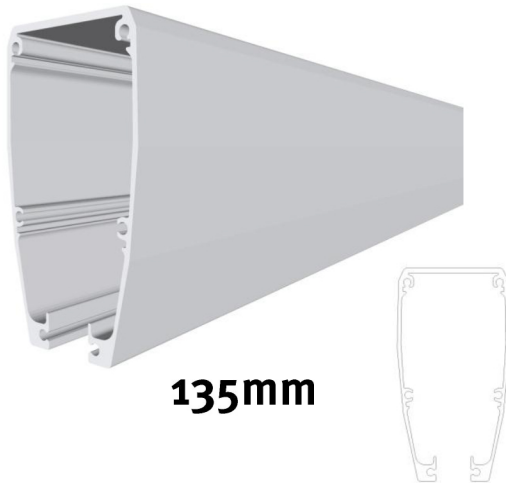
TRACKING



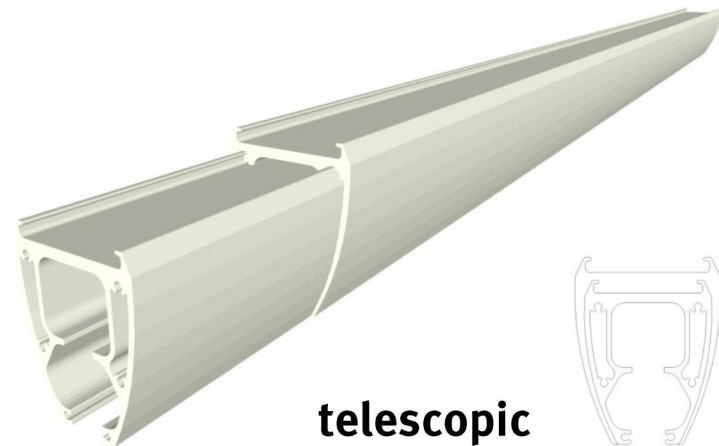
75mm



103mm



135mm

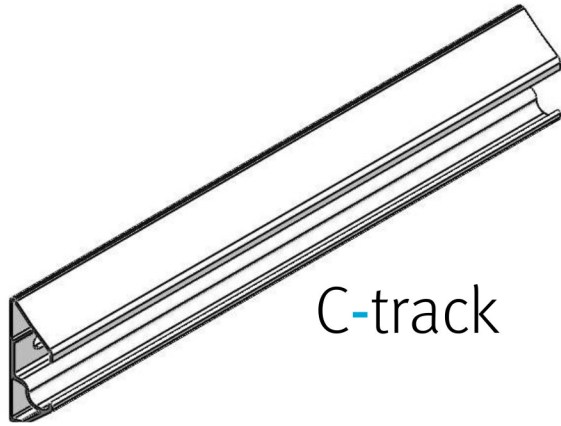


telescopic

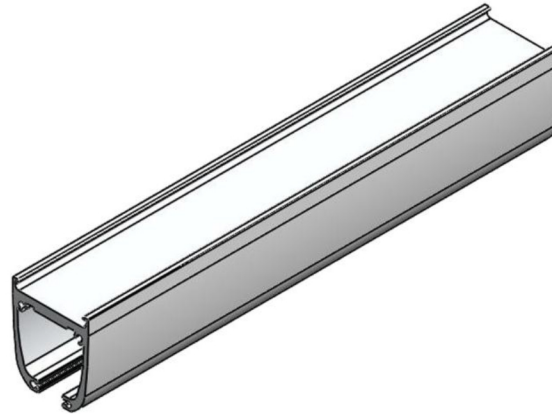
part of 
2D component
library in .dwg


Active Mobility

TRACKING: Wall & Ceiling



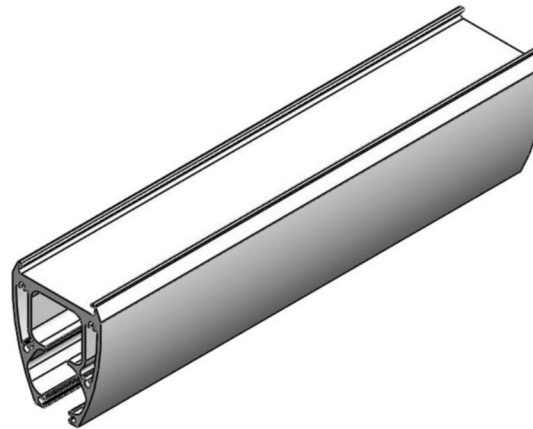
C-track



75 mm

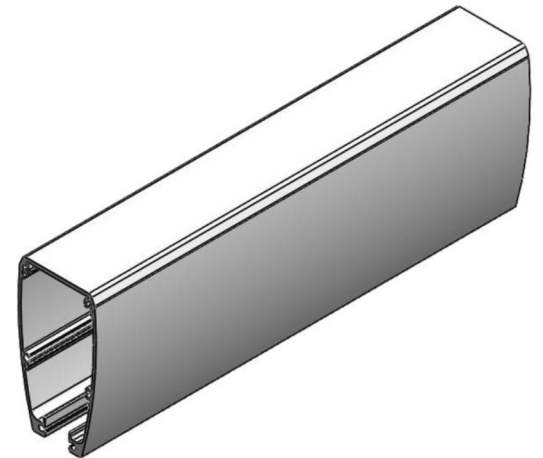


E-track



103 mm

135 mm



WALL MOUNTED TRACKING

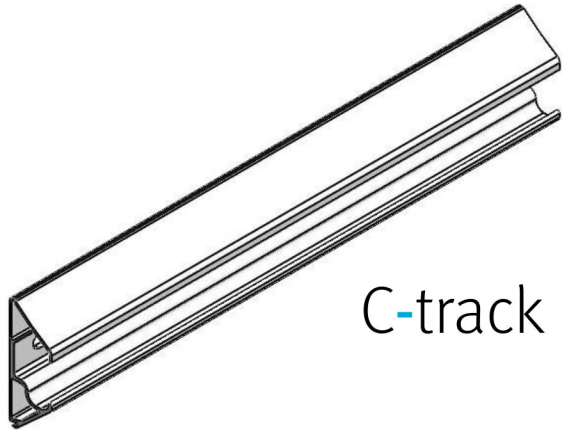
Revolution in tracking techniques

Attractive, slim paneling, blending discretely into home & institutional settings . Elegant alternative to unsightly wall & ceiling brackets

Cost saving compared to conventional tracking: quick & easy to install

Functional: traverse systems simply & quickly transferred from room to room

Versatile: mounted on most any wall type



C-track



E-track

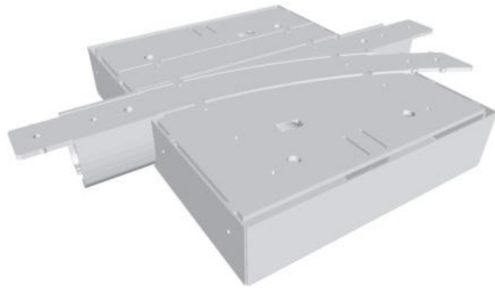
E-track: feature for hanging shelving, curtains, pictures



TRACKING

components

TRACK CHANGER



Left or right

DOOR CONNECTOR



TURNTABLE



CURVE



35 degree



45 degree

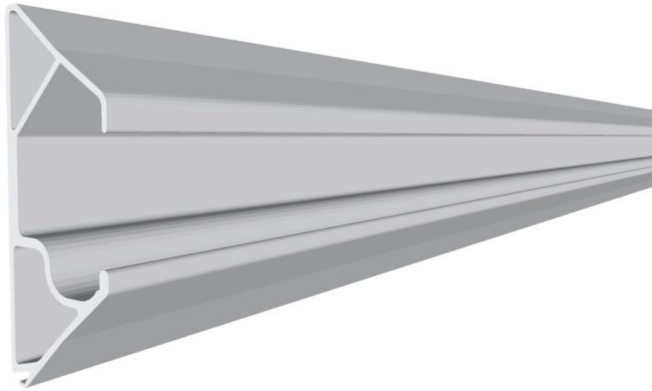


60 degree

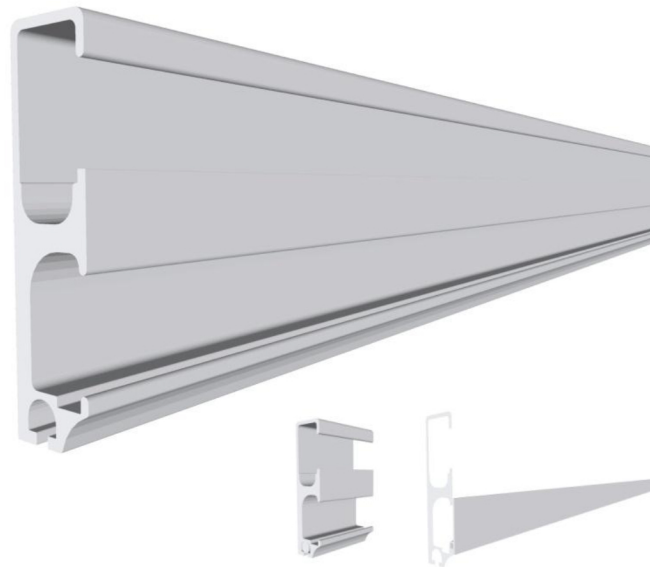


90 degree

TRACKING



C-track



E-track



Active Mobility

ARCHITECT FILE

3 Step Structure

CONCEPT MODEL

2D PLANNING

**3D PERSPECTIVE
AND ANIMATION**



Active Mobility

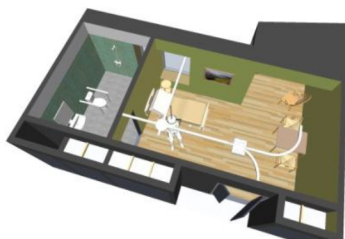
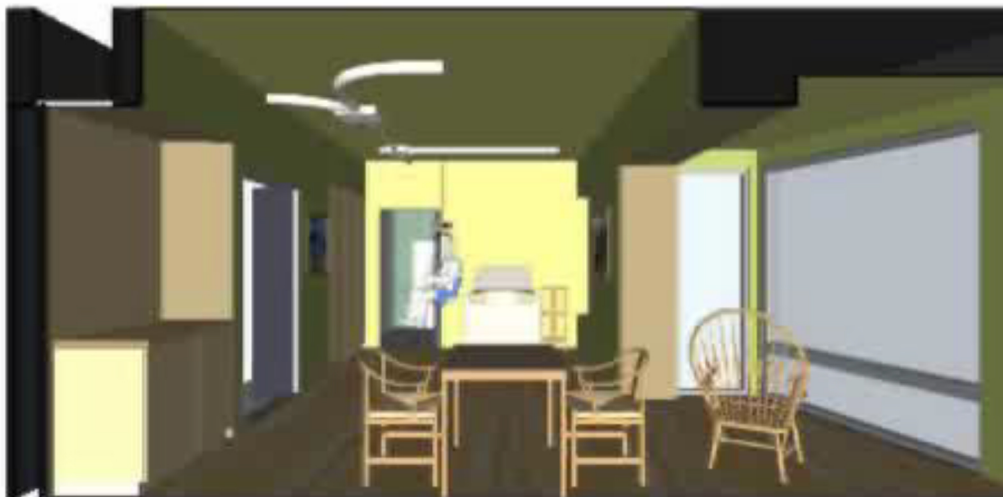


A: CONCEPT MODEL

Ceiling mounted

75mm track

Combined with
track changer,
turn table and/or
curves



Concept model inspired by Holmegårdsparken, a care centre in Denmark



CONCEPT MODEL

Wall mounted

E track

75mm, 103mm or
135mm traverse
as standard up to
4900mm free span



Active Mobility

Concept model inspired by Holmegårdsparken, a care center in Denmark

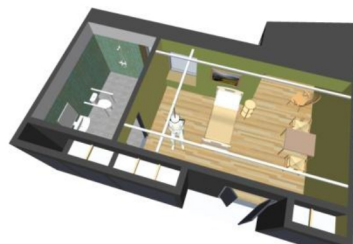
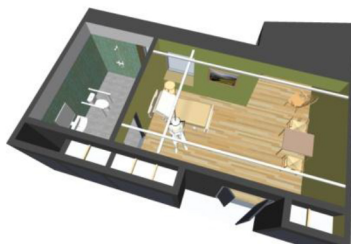
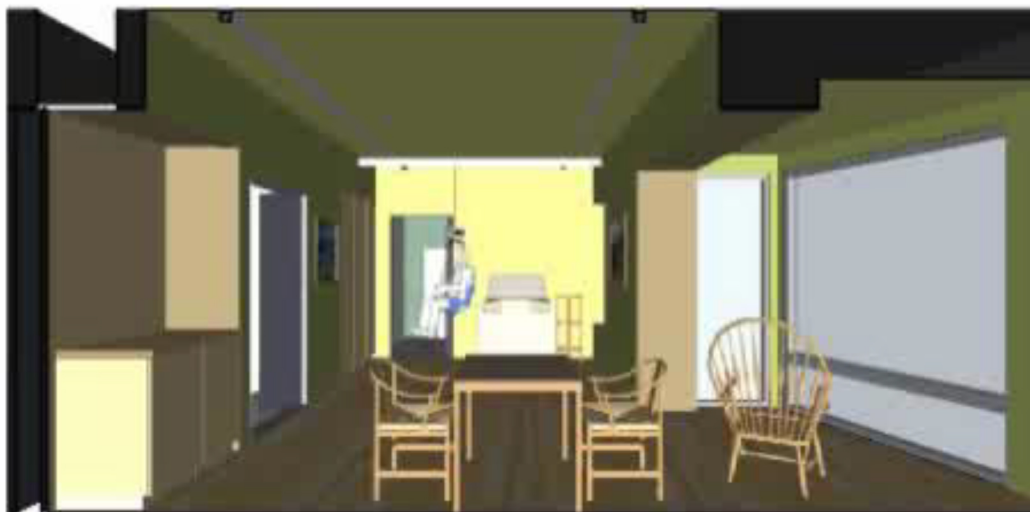


CONCEPT MODEL

Ceiling mounted

75mm track

75mm, 103mm or
135mm traverse
as standard up to
4900mm free span



Active Mobility

Concept model inspired by Holmegårdsparken, a care center in Denmark



Index

3	Overhead lifting solutions
4	Luna
6	Room to room transfer
7	Door connector
8	Mobile gantries
9	Tracking
12	Architect file – 3 step structure:
13	A: Concept model
21	B: 2D planning
25	C: 3D planning
29	Examples

We lift the world

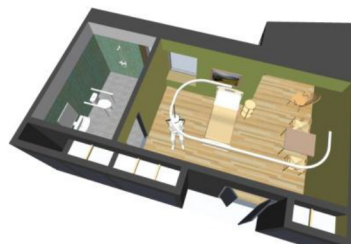


CONCEPT MODEL

Ceiling mounted

75mm track

single track
or with curves



Active Mobility

Concept model inspired by Holmegårdsparken, a care center in Denmark

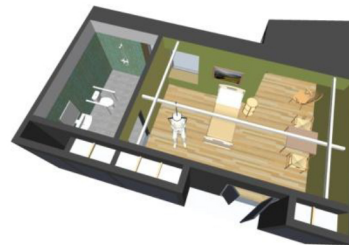
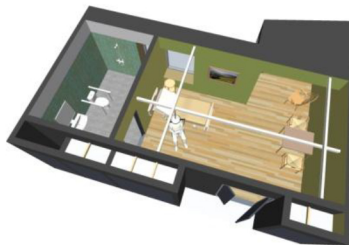
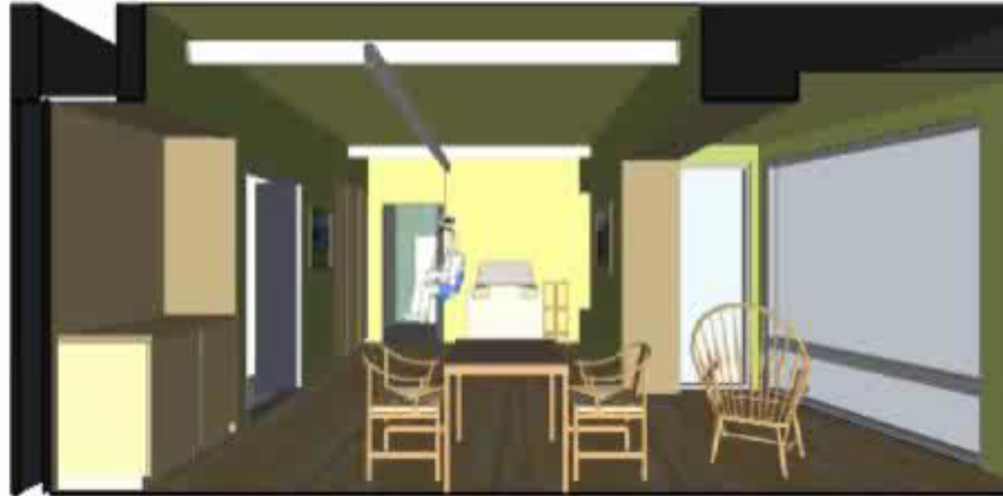


CONCEPT MODEL

Wall mounted

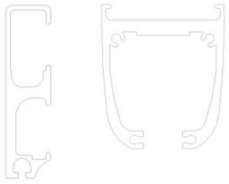
135mm track

75mm, 103mm or
135mm traverse
as standard up to
4900mm free span



Active Mobility

Concept model inspired by Holmegårdsparken, a care center in Denmark

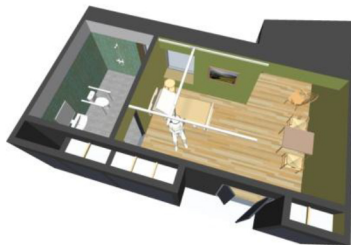


CONCEPT MODEL

Wall mounted

Combined

75mm, 103mm or
135mm traverse
as standard up to
4900mm free span



Active Mobility

Concept model inspired by Holmegårdsparken, a care center in Denmark

CONCEPT MODEL

Wall mounted

Terra 2

103mm traverse up to
3800mm free span



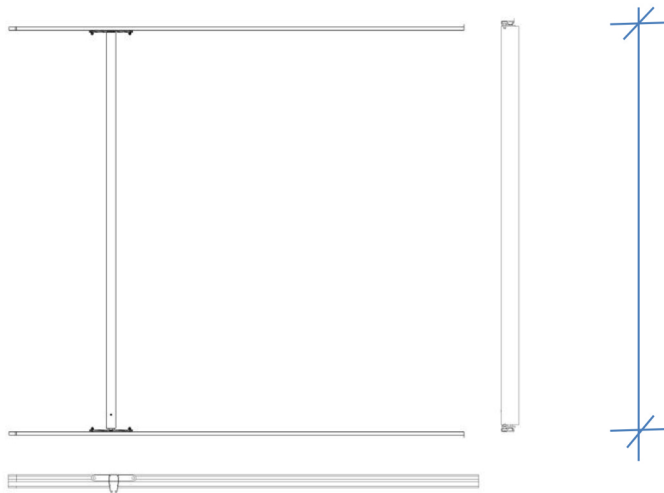
Active Mobility

Concept model inspired by Holmegårdsparken, a care center in Denmark

B: 2D planning

2D component
library in .dwg

EXAMPLE



LESS, NOT MORE

part of 
2D component
library in .dwg



E-track:

- 016-01028 E-track 4,3m
- 016-01033 E-track cover plate 4,3m
- 016-01133 End stop for E-track
- 016-02067 XY cart for 135mm traverse fixed
- 016-02068 XY cart for 135mm traverse adjustable

Traverse:

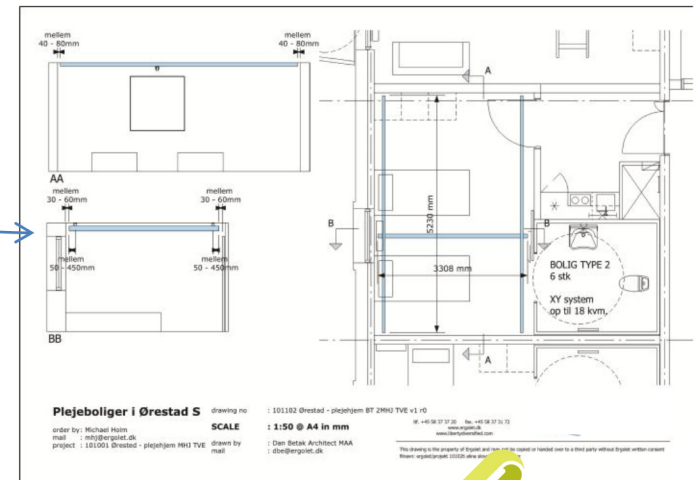
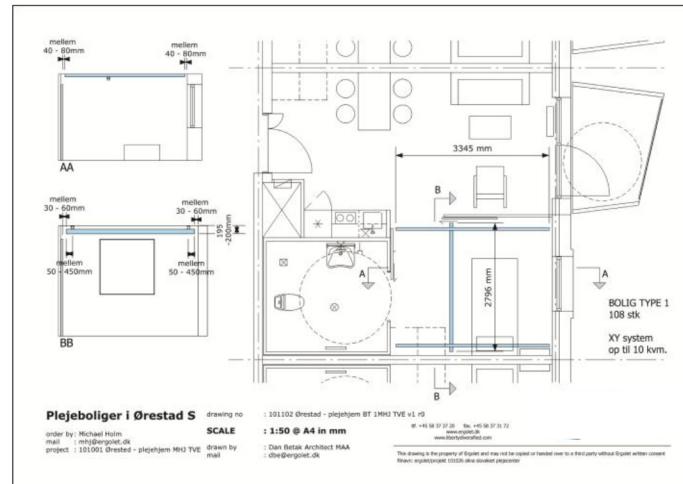
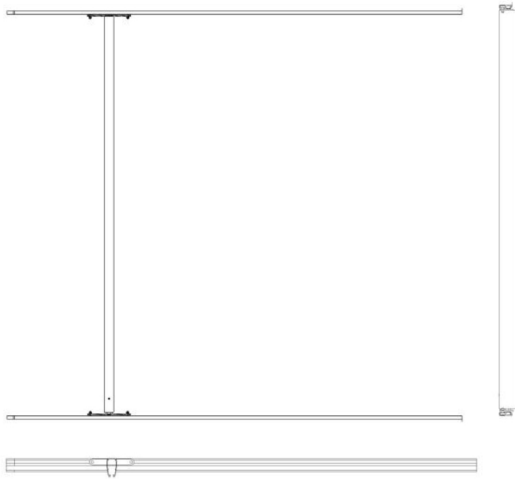
- 016-01003 Track 135mm 5,5m
- 016-01129 End stop for 135mm
- 016-02003 Cart with bayonet for 135mm



Active Mobility

2D planning

2D component
library in .dwg

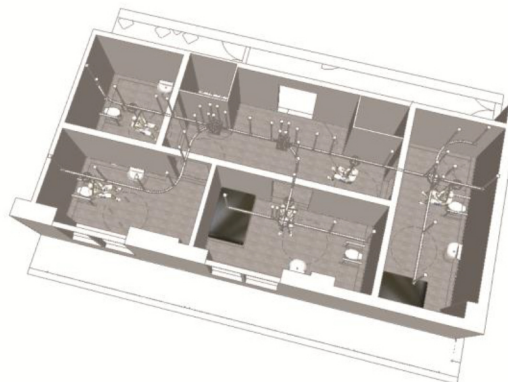
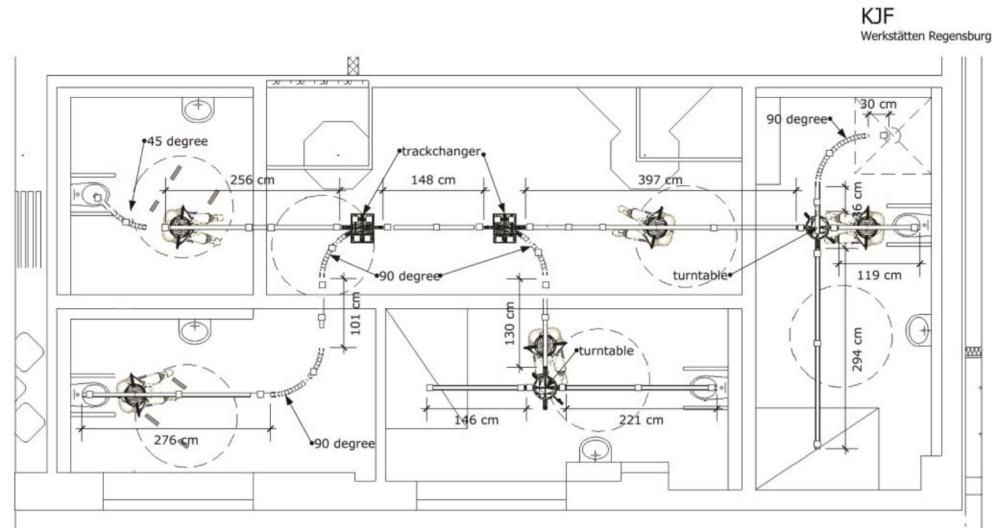


2D planning

2D component
library in .dwg

Solution A:

Itemnumber	Item	off
016-01022	75x4m	3
016-01021	75x5m	1
016-01023	75x3,2m	2
016-01040	75x90°	4
016-01047	75x45°	1
016-01036	75xConn	20
016-01070	75 Turn changer	1
016-01074	75xTrack chang.	1
016-01075	75xTrack chang.	1
016-02002	75 Cart bay	3
016-01109	75 Adj. brackets	42
016-01139	75 Side stab	10
016-01132	Endstop75	8
016-01122	Endcover75	6



Solution A:
Fixed 75mm track with
trackchanger and turntable

KJF Werkstätten Regensburg

order by: Lars Resch
e-mail : lars.resch@rmt.eu
project : 101.222 KJF Werk... JEV
Date : 23.dec.2010
Rev. : -

subject : XY
drawing : 101.223 KJF... JVE v1 r0
SCALE : 1:50 @ A3 in mm
architect: Dan Betak Architect MAA
e-mail : dbe@ergolet.dk

1st. +45 58 37 37 20
fax. +45 58 37 31 72
www.ergolet.dk
www.libertyverified.com

This drawing is the property of Ergolet and may not be copied
— handed over to a third party without Ergolet written consent.



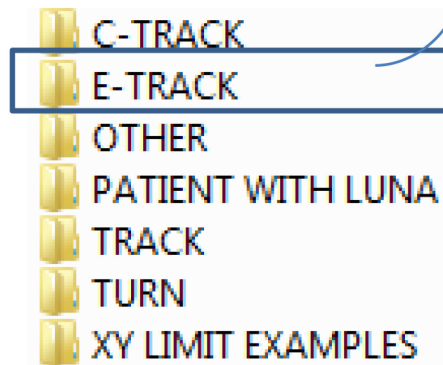
Active Mobility

part of

2D component
library in .dwg

2D planning

2D component
library in .dwg



Navn	Ændringsdato	Type	Størrelse
016-00998 E-track cover plate 7_5m P	27-10-2010 09:26	DWG-fil	7 KB
016-00998 E-track cover plate 7_5m SC AA	27-10-2010 09:27	DWG-fil	17 KB
016-01026 E-track with mounting holes 7_5m P	27-10-2010 09:51	DWG-fil	9 KB
016-01026 E-track with mounting holes 7_5m SC AA	27-10-2010 09:51	DWG-fil	16 KB
016-01027 E-track with mounting holes 7m P	27-10-2010 09:53	DWG-fil	9 KB
016-01027 E-track with mounting holes 7m SC AA	27-10-2010 09:53	DWG-fil	16 KB
016-01028 E-track with mounting holes 4_3m P	27-10-2010 09:54	DWG-fil	9 KB
016-01028 E-track with mounting holes 4_3m SC AA	27-10-2010 09:55	DWG-fil	16 KB
016-01029 E-track with mounting holes 5_5m P	27-10-2010 09:57	DWG-fil	9 KB
016-01029 E-track with mounting holes 5_5m SC AA	27-10-2010 09:57	DWG-fil	16 KB
016-01031 E-track cover plate 7m P	27-10-2010 09:58	DWG-fil	8 KB
016-01031 E-track cover plate 7m SC AA	27-10-2010 09:59	DWG-fil	17 KB
016-01032 E-track cover plate 5_5m P	27-10-2010 10:01	DWG-fil	7 KB
016-01032 E-track cover plate 5_5m SC AA	27-10-2010 10:01	DWG-fil	17 KB
016-01033 E-track cover plate 4_3m P	27-10-2010 10:03	DWG-fil	7 KB
016-01033 E-track cover plate 4_3m SC AA	27-10-2010 10:03	DWG-fil	17 KB
016-01115 Wall end bracket for E-track P	27-10-2010 10:11	DWG-fil	9 KB
016-01115 Wall end bracket for E-track SC AA	27-10-2010 10:11	DWG-fil	17 KB

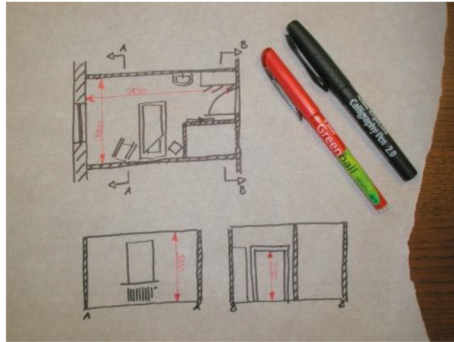


016-01026 E-track with mounting holes 7_5m SC AA.dwg



016-01026 E-track with mounting holes 7_5m P.dwg

A: Make a sketch or drawing of the room, or take a digital picture



Measure floor length & width

AA: Height

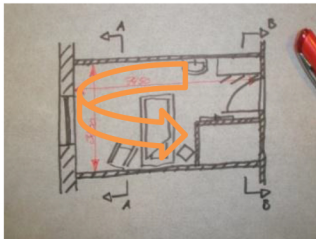
BB: Control measurements excl. door

Use one color for room drawing and
another for measurements, in millimeters

C: 3D planning

How to register a room

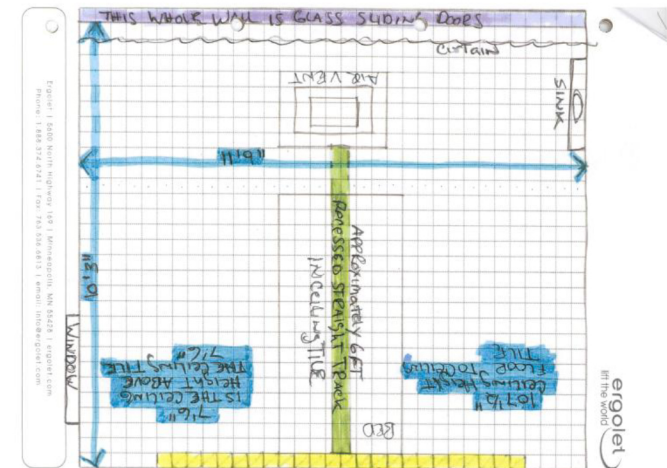
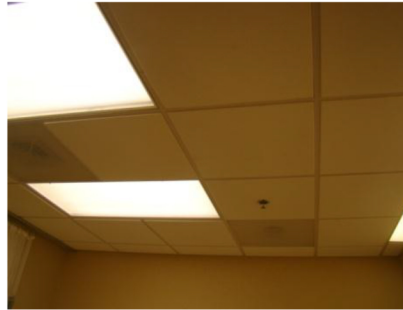
B: Take digital pictures of the room, showing different perspectives



C: Take pictures of furniture, the outside view, and details located close to the ceiling



3D planning



Material received from
Ergolet Americas USA
based on: *How to register a room*



ERGOLET'S HISTORY

Founded in 1973 in the town of Korsoer, Denmark

Changed strategy in 1988 to exclusively focus on the production of technical aids for the mobility impaired

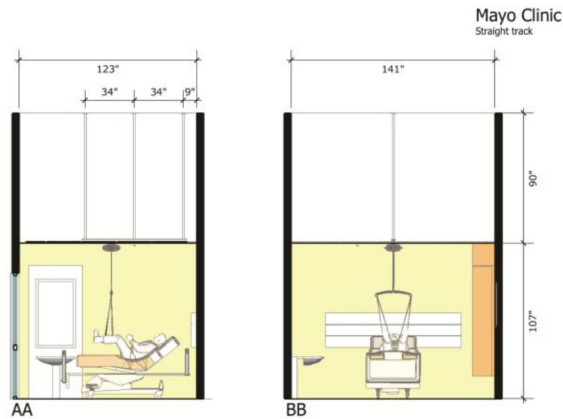
Emphasis always been on innovation, e.g. our design nominated Luna

Products characterised by safety, comfort, functionality, modern Scandinavian design, pleasing aesthetics



Active Mobility

3D planning



Jacksonville Mayo Clinic FL.

order by: Chris Federer
e-mail : chris@ergolet.com
project : 110125 Mayo Clinic
Date : 09.feb.2011
Rev. : -

subject : Recessed straight track
drawing : 110209 Mayo Clinic FL v1 r0
SCALE : 1/4"=1'-0" @ 8,5x10 (1:48)
architect: Dan Betak Architect MAA
e-mail : dbet@ergolet.dk

ALL RIGHTS RESERVED
This drawing is the property of Ergolet and may not
be copied or reproduced without the
written consent of Ergolet.



Mayo Clinic
Straight track

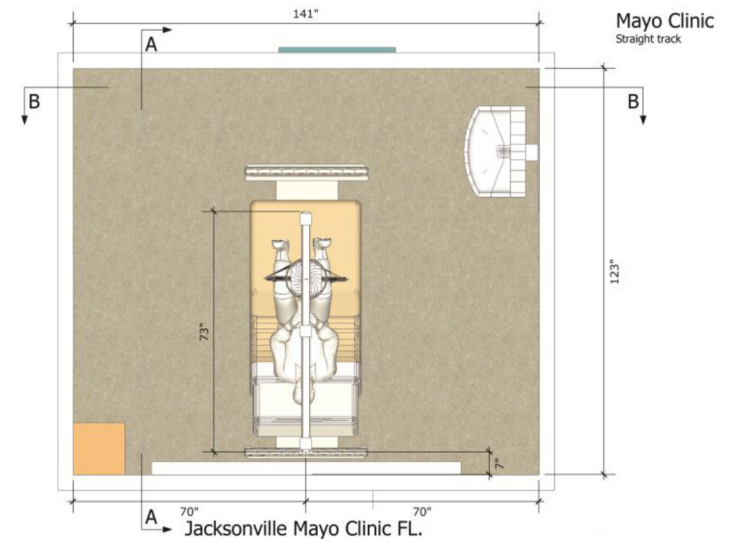


Jacksonville Mayo Clinic FL.

order by: Chris Federer
e-mail : chris@ergolet.com
project : 110125 Mayo Clinic
Date : 09.feb.2011
Rev. : -

subject : Recessed straight track
drawing : 110209 Mayo Clinic FL v1 r0
SCALE : 1/4"=1'-0" @ 8,5x10 (1:48)
architect: Dan Betak Architect MAA
e-mail : dbet@ergolet.dk

ALL RIGHTS RESERVED
This drawing is the property of Ergolet and may not
be copied or reproduced without the
written consent of Ergolet.



order by: Chris Federer
e-mail : chris@ergolet.com
project : 110125 Mayo Clinic
Date : 09.feb.2011
Rev. : -

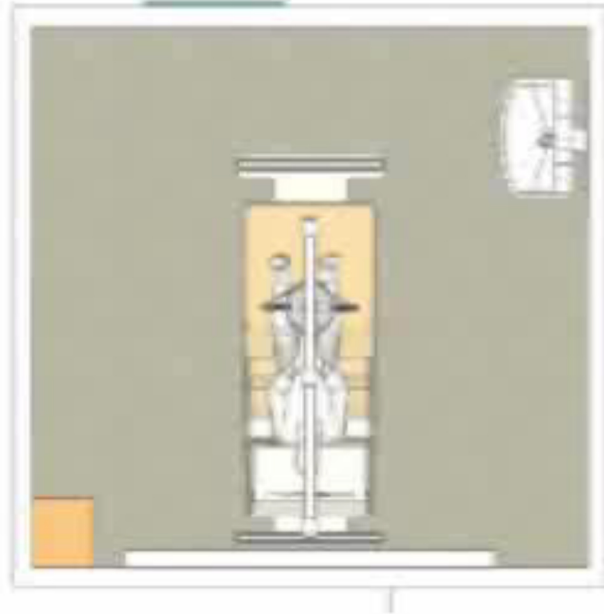
subject : Recessed straight track
drawing : 110209 Mayo Clinic FL v1 r0
SCALE : 1/2"=1'-0" @ 8,5x10 (1:48)
architect: Dan Betak Architect MAA
e-mail : dbet@ergolet.dk

ALL RIGHTS RESERVED
This drawing is the property of Ergolet and may not
be copied or reproduced without the
written consent of Ergolet.

Material converted into
Ergolet layout



3D planning

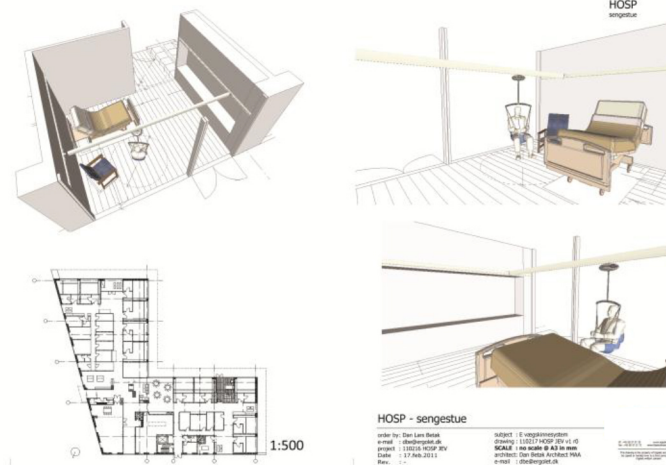
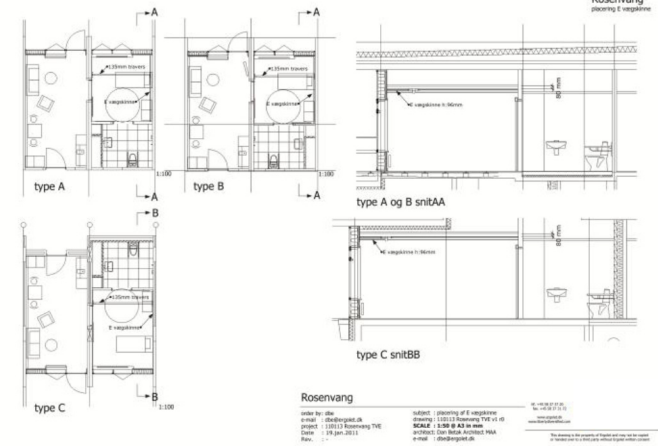
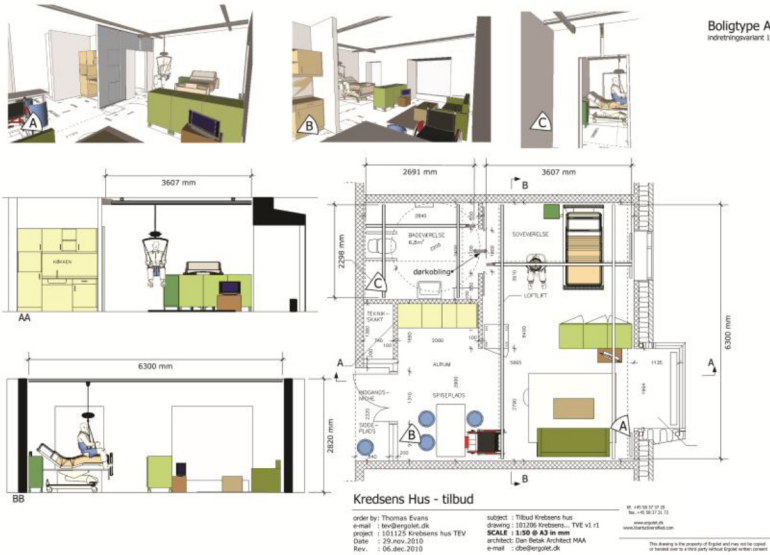


Plus an animation
to show the customer
how Ergolet's products will
be placed – a view in the 3D model

Examples



Examples





LIBERTY DIVERSIFIED INTERNATIONAL

Caring. Innovation. Trust. Excellence

In 2008 Ergolet was acquired by the Minnesota based, family owned company, Liberty Diversified International (LDI)

LDI has a history of almost 100 years in the making

LDI's diverse family of 9 companies spans key markets, including healthcare, precision machining, paper & packaging, building products and workplace environments

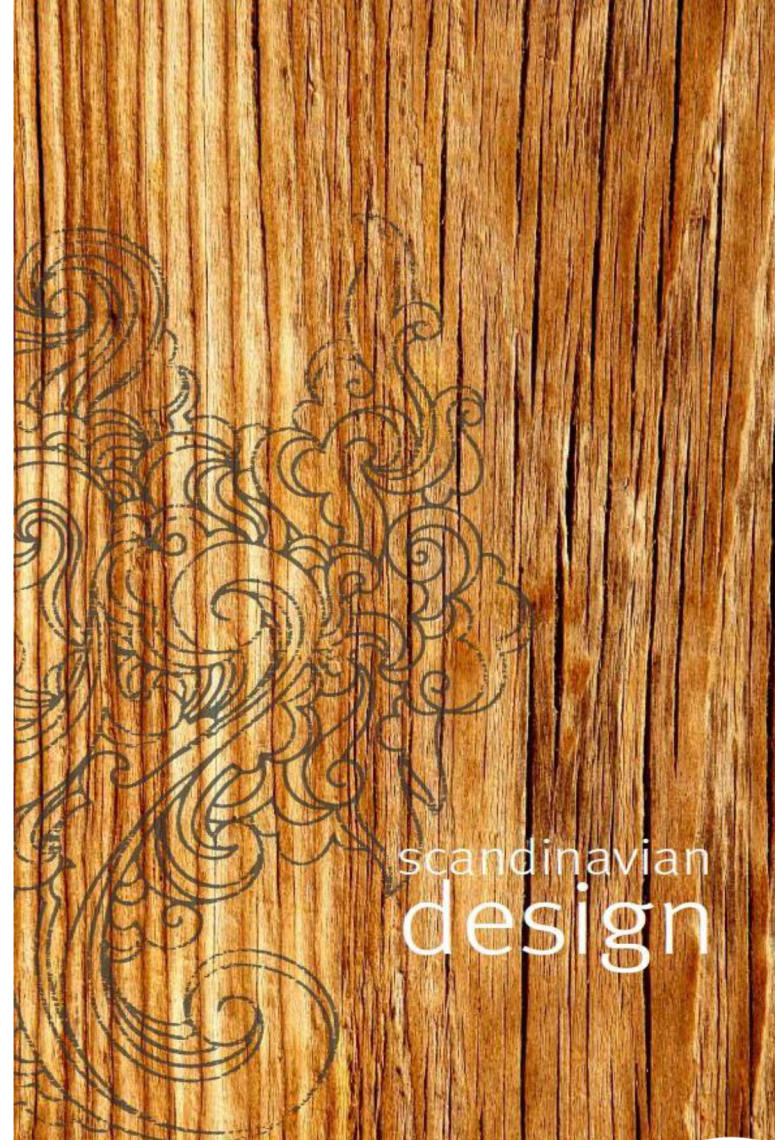




OVERHEAD LIFTING SOLUTIONS

Luna overhead lift: elegant strength, total flexibility,
innovative Scandinavian design

Unique wall mounted E-track & C-track.



LUNA

Innovative breakthrough in design,
combining form with function

Two in One: fixed & portable lift in same
unit for unmatched versatility & flexibility

3 models: Fixed, Portable & Vertical.
Weight capacities: 200 kg & 275 kg

Emergency functions on hand control &
lifting cassette

Charging through hand control & wall /
trolley charger



Active Mobility



Fixed mode



Portable mode



Vertical mode

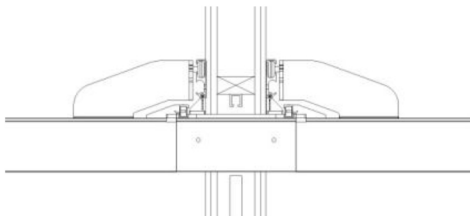


ROOM TO ROOM TRANSFER

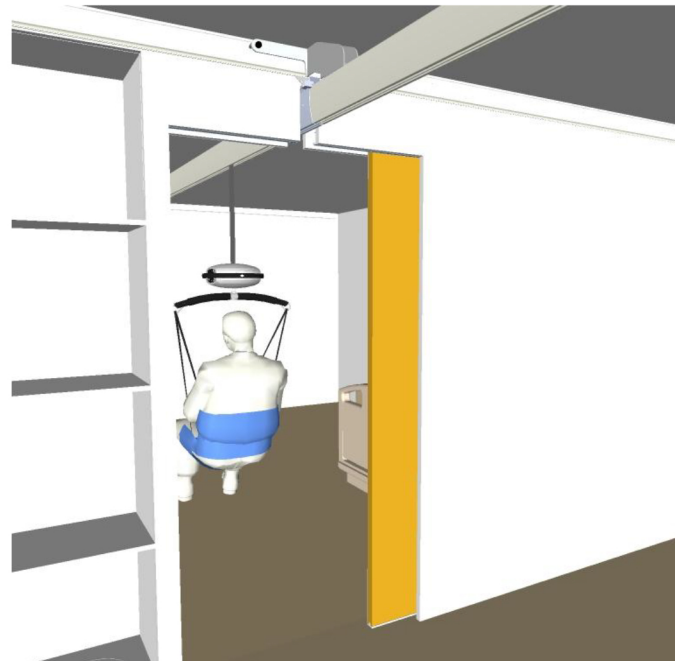
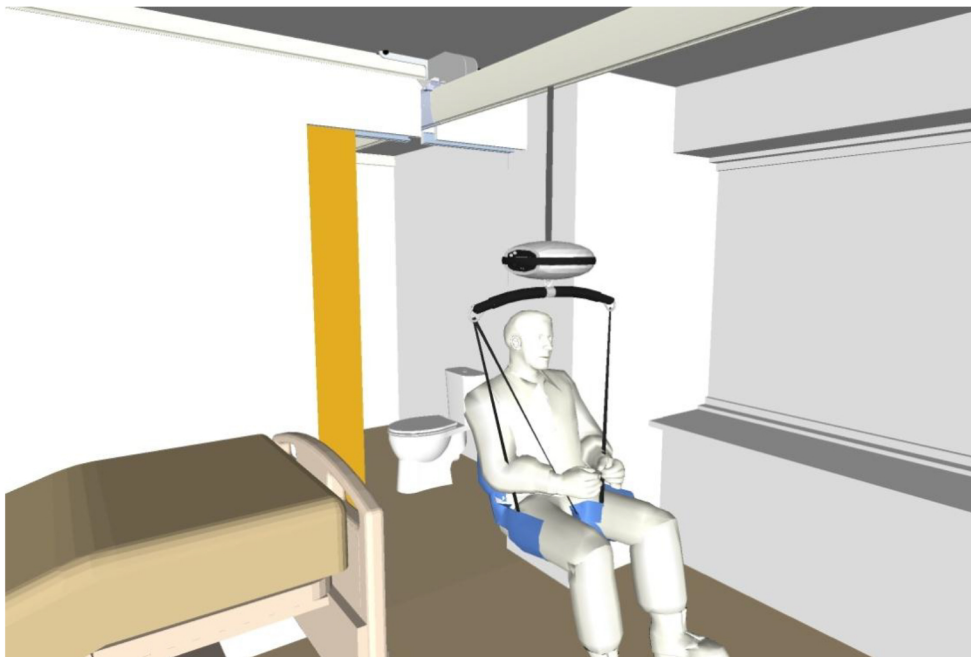


Safely and simply with one or two units

E track door connector



DOOR CONNECTOR



Simple, manually operated
opening & closing mechanism

Actual project, Rishavevej, Denmark, using 3D planning